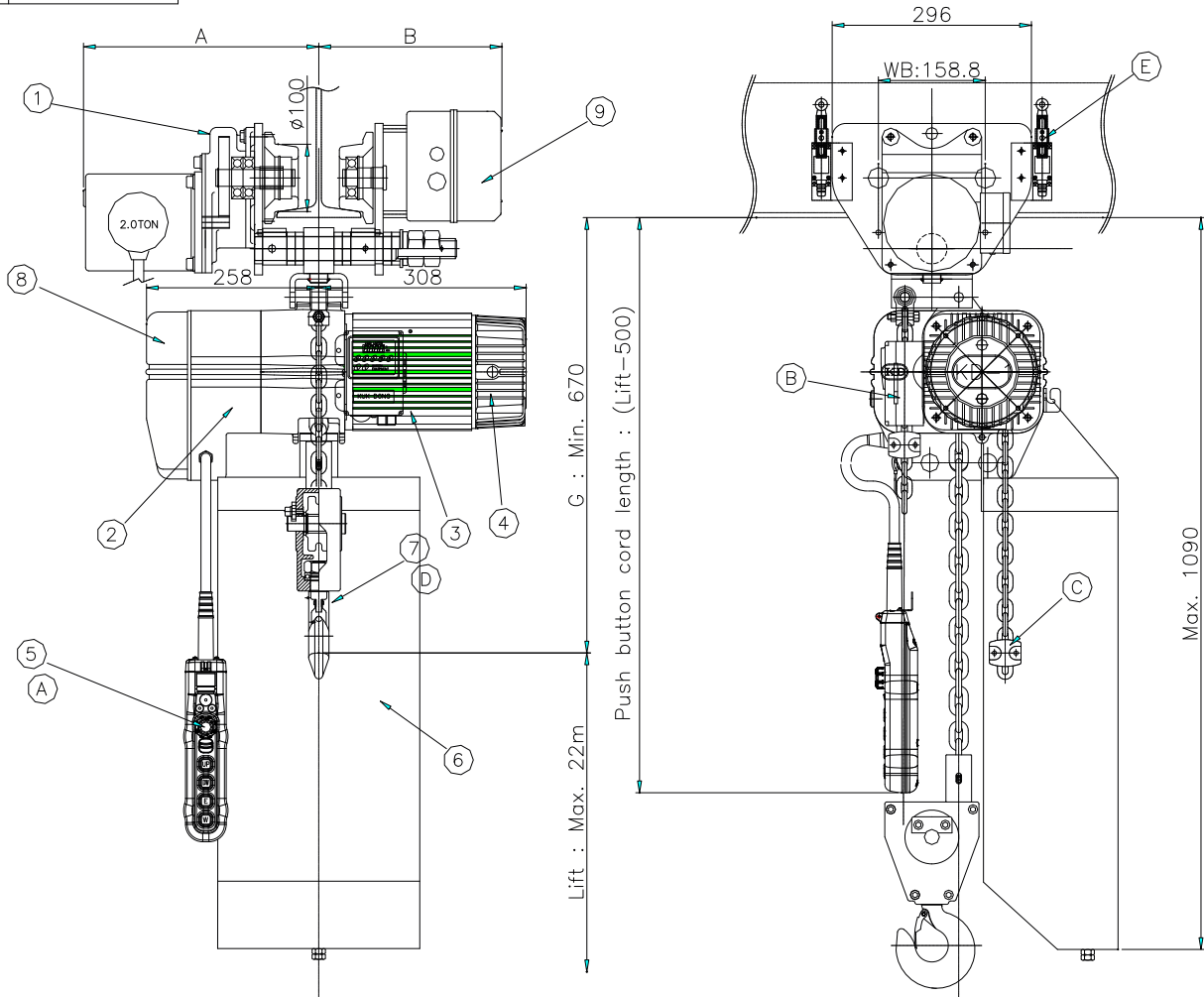


?	?	KD1M-2T
?	?	KD-1M-2T-L22



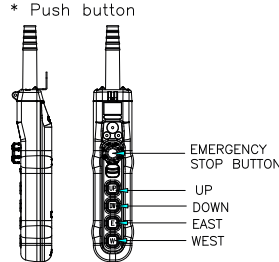
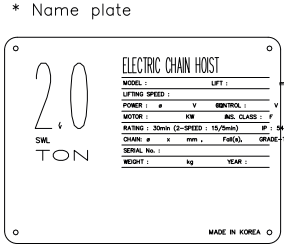
NO	DESCRIPTION	MATERIAL	Q'TY	SIZE	REMARK
1	Trolley	-	1		
2	Reducer-ASSY	-	1		
3	Motor	-	1		
4	Brake- ASSY	-	1		
5	Push Button S/W	-	1		
6	Chain Bucket	-	1		
7	Bottom Hook-ASSY	-	1		
8	Control Panel (??)	-	1		
9	Control Panel (??)	-	1		
10					

SAFETY DEVICE					
A	EMERGENCY STOP BUTTON S/W	-	1		
B	O.L.P	-	1		
C	CHAIN STOP HOLDER	-	1		
D	SAFETY LATCH	-	1		
E	LIMIT S/W (??)	-	1		

CAPACITY	2.0 Ton
TEST LOAD	2.5 Ton
LIFT	Max. 22 m
HOISTING	MOTOR: 1.5 kw x 4 poles SPEED: 4 m/min
TRAVERSING	MOTOR: 0.4 kw x 4 poles / 0.4/0.2 kw x 4/8 poles SPEED: HIGH 12 m/min / 12/6 m/min, 24 m/min / 24/12 m/min INVERTER: 2~12 m/min
BRAKE SYSTEM	HOISTING: DC ELECTRO MAGNETIC BRAKE TRAVERSING: AC SELF BRAKE DUAL, INVERTER : DC BRAKE
POWER SOURCES	MAIN: AC 3ø 220/380/440 / 460/480V 60Hz CONTROL: AC 1ø 48/110/120V 60Hz
OPERATION METHOD	PUSH BUTTON SWITCH TYPE ON FL.
PAINT COLOR	10 B 3/5
BEAM SIZE	100, 125, 150, 175, 190, 200
LOAD CHAIN	ø7.1 x P21.2mm x 2falls
NET WEIGHT	Max. 160 kg

Lift : Max. 22m  
Push button cord length : (Lift-500)  
C : Min. 670

Max. 1090



BEAM WIDTH	A	B
100	337	260
125	350	272
150	363	285
175	376	298
190	384	305
200	394	315

REV	DATE	DESCRIPTION	DRAWN	CHECK	APPROV
	08.MAR.201	REDRAWING	K.H.Han	-	-
PROJECT					
CLIENT					
MANUFACTURER					
KUKDONG HOIST CO., LTD.					
TITLE					
ASSEMBLY DRAWING KD-1M-2T-L22					
SCALE	DWG. NO.	SHT. NO.		REV.	
N/S					