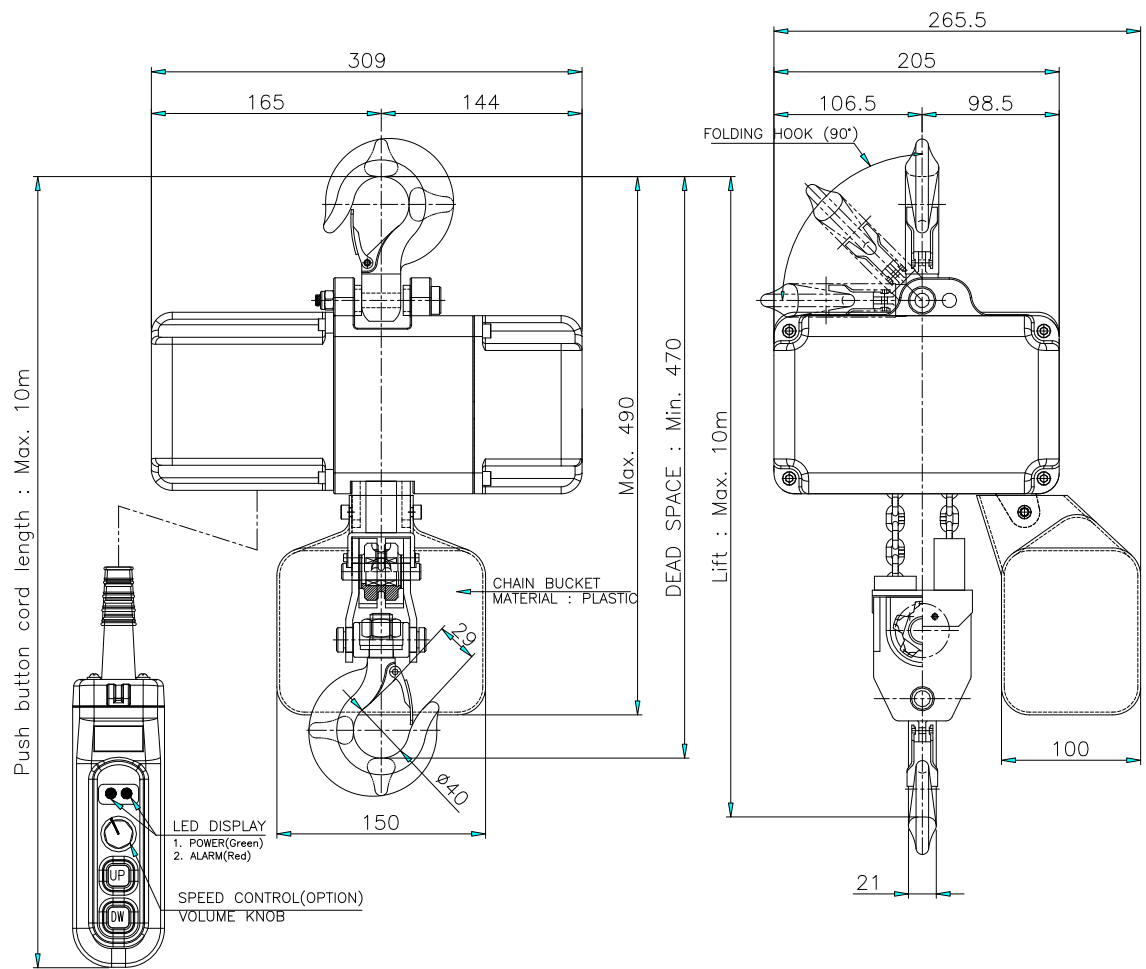


NO	DESCRIPTION	MATERIAL	Q'TY	SIZE	REMARK
1	MN-490(500)	-	-	-	



MODEL	MN-490(500)	
CAPACITY	490(500) kg	
TEST LOAD	612(625) kg	
LIFT	Max. 10 m	
HOISTING	MOTOR	BLDC 400w
	SPEED	5 m/min
	SPEED CONTROL	Max. 6 m/min (Variable:Option)
BRAKE	MECHANICAL BRAKE	
SAFETY DEVICE	SLIP CLUTCH SYSTEM	
POWER SOURCES	AC 1ϕ 220V 50/60Hz	
OPERATION METHOD	PUSH BUTTON SWITCH TYPE ON FL.	
LED DISPLAY	POWER(green) & ALARM(red)	
OPERATING TEMPERATURE	-10°C ~ 40°C	
International Protection	54	
LOAD CHAIN	ϕ4.0 x P12.0mm x 2fall	
PAINT COLOR	10B 3/5	
NET WEIGHT	Max. 25 kg	

REV	DATE	DESCRIPTION	DRAWN	CHECK	APPROV
PROJECT					
CLIENT					
MANUFACTURER					
TITLE					
ASSEMBLY DRAWING MN-490(500)					
SCALE	DWG. NO.			SHT. NO.	REV.
N/S					