



KD 크동호이스트(주)
KUKDONG HOIST CO.,LTD.



www.kdhoist.com

*Technology, Efficiency, Handiness
All There are possible at KUK-DONG HOIST Co., Ltd.'s*

MINI ELECTRIC CHAIN HOIST

MN-125/250/490/500(kgs)

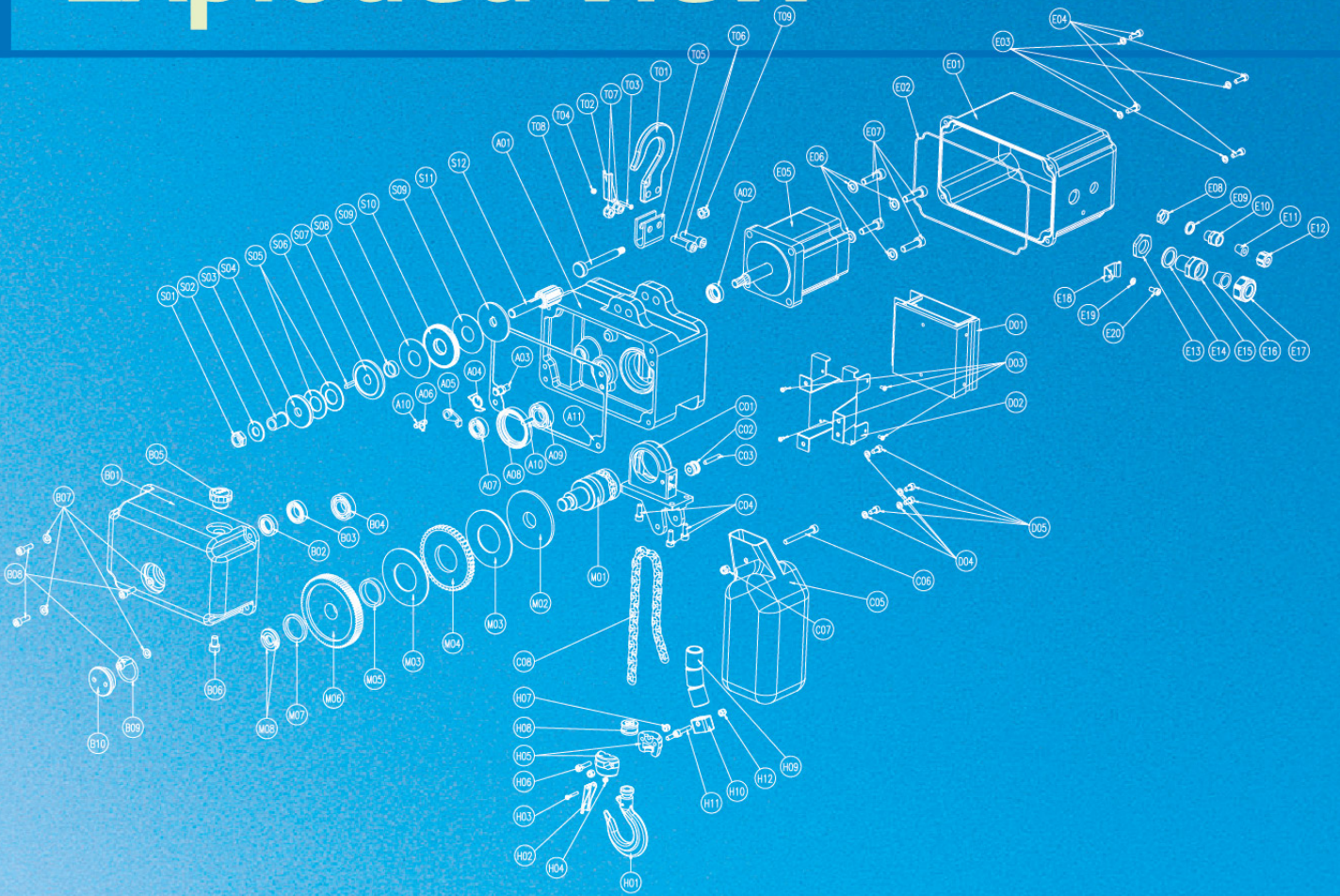
Single Phase (220V)
Mini Size & Weight (14kgs)
Push Button (Easy to Use)
Brushless DC Motor
Speed Regulation Dial (max 12m/min)
Mechanical Brake & Slip Clutch
High Tension Load Chain (4.0mm)



MN250
KUKDONG HOIST
MADE IN KOREA

Rated Load 250kg
Hoisting speed max. 15m/min
Motor: BLDC/50W

MINI Electric Chain Hoist Exploded View



SLIP CLUTCH PART

NO	DESCRIPTION	MATERIAL	QTY	SIZE	REMARK
S01	LOCK NUT	PUR.	1	M12	
S02	TORQUE CONTROL WASHER	SS41	1	12x12x26	
S03	SLEEVE	S4SC	1	#12x19.5x29L	
S04	SPRING GUIDE	S4SC	1	#44.5x12.5L	
S05	CONICAL SPRING	PUR.	2	#40x20.4x2.75H	
S06	KEY	PUR.	1	2R 4x4x16	
S07	PRESSURE PLATE B	SS41	1	112x95x#12	
S08	BUSH	BC3	1	#21x#17x7L	
S09	LINING	PAPER	2	11x#84x#21	for PINION GEAR
S10	PINION GEAR	S4SC	1	17x#93.6x#21	
S11	PRESSURE PLATE A	SS41	1	17x#84x#12	
S12	2nd PINION	SCW415	1	#24.1x97.5	

MAIN BODY PART

NO	DESCRIPTION	MATERIAL	QTY	SIZE	REMARK
A01	MAIN BODY	AC2B	1	250kg	ST : 2.788kg
A02	OL RETAINER	PUR.	1	#15x#25x7	
A03	PANEL PIN	S4SC	1	#R 11x11.5x26L	
A04	PANEL SPRING	SWB	1	#1.2x3	
A05	PANEL	S4SC	1		
A06	SNAP RING	PUR.	1	#9	STW-SB
A07	BALL BEARING	PUR.	1	#12x#28x8	6001zz
A08	OL RETAINER	PUR.	1	#42x#35x3	
A09	BALL BEARING	PUR.	1	#17x#35x10	6003zz
A10	SPRING PIN	PUR.	2	#6x20	
A11	GASKET	Nr 6839E	1	11x204.5x127.6	for GEAR CASE

TOP HOOK PART

NO	DESCRIPTION	MATERIAL	QTY	SIZE	REMARK
T01	TOP HOOK	S4SC	1	250kg(125kg)	
T02	SWIFT LATCH	SS41	1	Small	
T03	PAW HEAD SCREW	PUR.	1	M3x20	
T04	LOCK NUT	PUR.	1	M3	
T05	TOP HOOKER	SS41	1	230kg(125kg)	
T06	SOCKET HEAD CAP BOLT	PUR.	2	M8x30	
T07	LOCK NUT	PUR.	2	M8	
T08	TOP HOOK PIN	S4SC	1	#2.0x90L	
T09	LOCK NUT	PUR.	1	M8	

REDUCER CASE PART

NO	DESCRIPTION	MATERIAL	QTY	SIZE	REMARK
B01	REDUCER CASE	AC2B	1	250kg	ST : 1.814kg
B02	OL RETAINER	PUR.	1	#17x#28x7	
B03	BALL BEARING	PUR.	1	#17x#30x7	6903zz
B04	OL BEARING	PUR.	1	#17x#35x10	6003zz
B05	OL ODP	PUR.	1	PT.1/2	PLASTIC
B06	OL DRAM BOLT	PUR.	1	M8x10	
B07	SPRING LOCK WASHER	PUR.	4	M6	
B08	SOCKET HEAD CAP BOLT	PUR.	4	M8x20	
B09	O-RING	PUR.	1	P28x1.5	for TORQUE CONTROL ODP
B10	TORQUE CONTROL CAP	S4SC	1	#40x13.5	

BOTTOM HOOK PART

NO	DESCRIPTION	MATERIAL	QTY	SIZE	REMARK
H01	BOTTOM HOOK	S4SC	1	250kg(125kg)	
H02	SAFETY CLIP	SS41	1	Small	with SPRING
H03	PAW HEAD SCREW	PUR.	1	M3x20	
H04	LOCK NUT	PUR.	1	M3	
H05	BOTTOM HOOKER	S4SC	2	250kg(125kg)	※중심중
H06	SOCKET HEAD CAP BOLT	PUR.	2	M3x20	
H07	LOCK NUT	PUR.	2	M3	
H08	SLIP OUSHON	URETHAN	1	#22x12.4	※강철, 목재
H09	CHAIN STOP HOLDER B	SOP	3	#21.7x3.67x22.5L	
H10	CHAIN STOP HOLDER A	S4SC	1	250kg(125kg)	※중심중
H11	SOCKET HEAD CAP BOLT	PUR.	1	M5x15	
H12	LOCK NUT	PUR.	1	M5	

MECHANICAL BRAKE & LOAD SHEAVE PART

NO	DESCRIPTION	MATERIAL	QTY	SIZE	REMARK
M01	LOAD SHEAVE	S4SC	1	#4x20x4x4	
M02	PRESSURE PLATE C	SS41	1	17x#100x#22	
M03	LINING	WOODEN	2	73x#48x#39	
M04	BATCHET GEAR	S4SC	1	#90x#38x#8T	
M05	BUSH	BC3	1	#38x#32x#8L	
M06	LOAD GEAR	S4SC	1	#100x#32x#21.5T	
M07	COTTER PIN	SCW41	1	73.8x#3.8.1x#30.5	
M08	COTTER	SCW41	2	76.8x#3.8x#12	

CONTROL PART

NO	DESCRIPTION	MATERIAL	QTY	SIZE	REMARK
E01	CONTROL PART COVER	AC2B	1	250kg	ST : 1.124kg
E02	O-RING	PUR.	1	P #1.9x#6.06	for CONTROL part Cover
E03	SPRING LOCK WASHER	PUR.	4	M5	
E04	SOCKET HEAD CAP BOLT	PUR.	4	M5x15	
E05	BLDC MOTOR	PUR.	1	400W	
E06	SPRING LOCK WASHER	PUR.	4	M8	
E07	SOCKET HEAD CAP BOLT	PUR.	4	M8x30	
E08	LOCK NUT	PUR.	1	NEC-01-8A	
E09	PACKING	PUR.	1	NEC-01-8A	
E10	CABLE GUANO BODY	PUR.	1	NEC-01-8A	
E11	SLEEVE	PUR.	1	NEC-01-8A	
E12	CABLE GUANO CAP	PUR.	1	NEC-01-8A	
E13	LOCK NUT	PUR.	1	NEC-01-16A	
E14	PACKING	PUR.	1	NEC-01-16A	
E15	CABLE GUANO BODY	PUR.	1	NEC-01-16A	
E16	SLEEVE	PUR.	1	NEC-01-16A	
E17	CABLE GUANO CAP	PUR.	1	NEC-01-16A	
E18	CABLE CLP	SS41	1	MN250	
E19	SPRING LOCK WASHER	PUR.	1	M5	
E20	SOCKET HEAD CAP BOLT	PUR.	1	M5x10	

DRIVER(CONTROLLER) PART

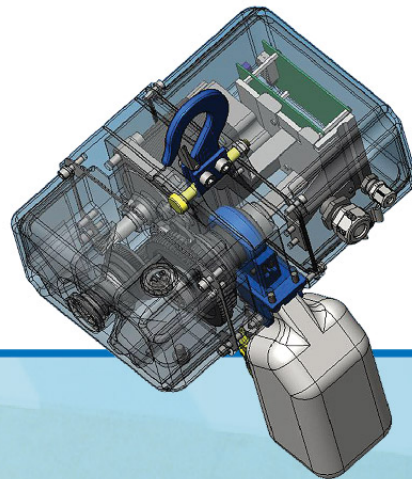
NO	DESCRIPTION	MATERIAL	QTY	SIZE	REMARK
D01	BLDC DRIVER	-	1		
D02	DRIVER PLATE	SS41	1		※중심중
D03	PAW HEAD SCREW	PUR.	4	M3x10	
D04	SPRING LOCK WASHER	PUR.	4	M5	
D05	SOCKET HEAD CAP BOLT	PUR.	4	M5x10	

PUSH BUTTON PART

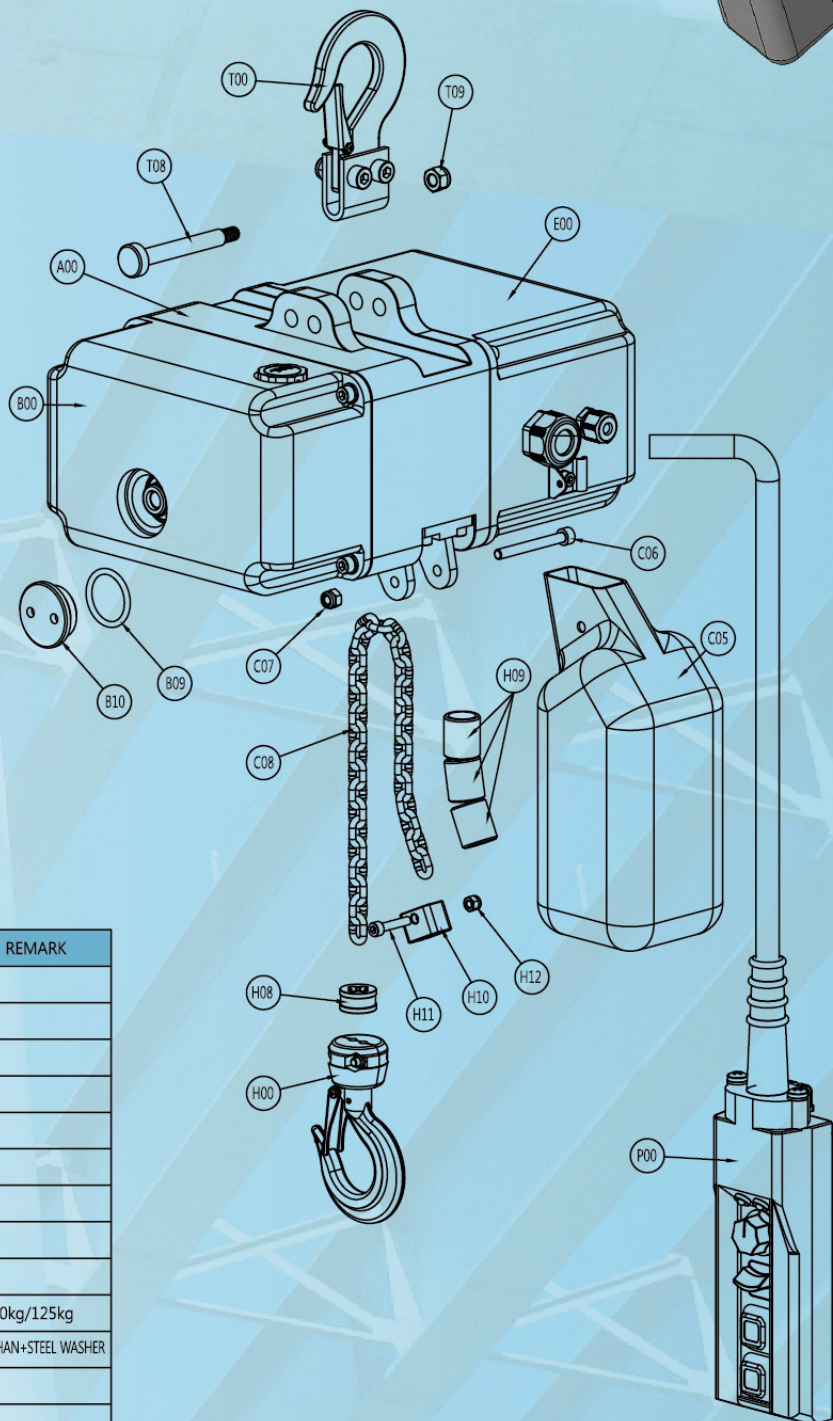
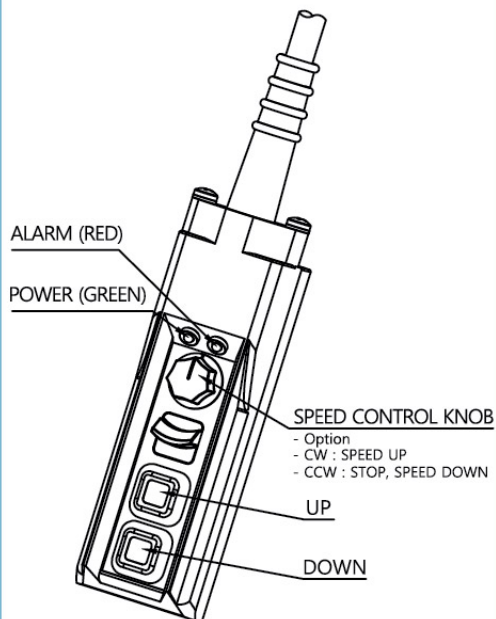
NO	DESCRIPTION	MATERIAL	QTY	SIZE	REMARK
P01	PUSH BUTTON	PUR.	1		
P02	CONTROL CABLE	VCT	1	0.750x#C	
P03	LAMP-GREEN	PUR.	1	LED : #5	
P04	LAMP-RED	PUR.	1	LED : #5	
P05	SPEED CONTROL KNOB	PUR.	1	10K	VOLUME RESISTANCE
P06	BUTTON-UP	PUR.	1		
P07	BUTTON-DOWN	PUR.	1		
P08	POWER CABLE	PUR.	1	AC 14 110/220V	

MINI Electric Chain Hoist

BODY Assembly



PUSH Button



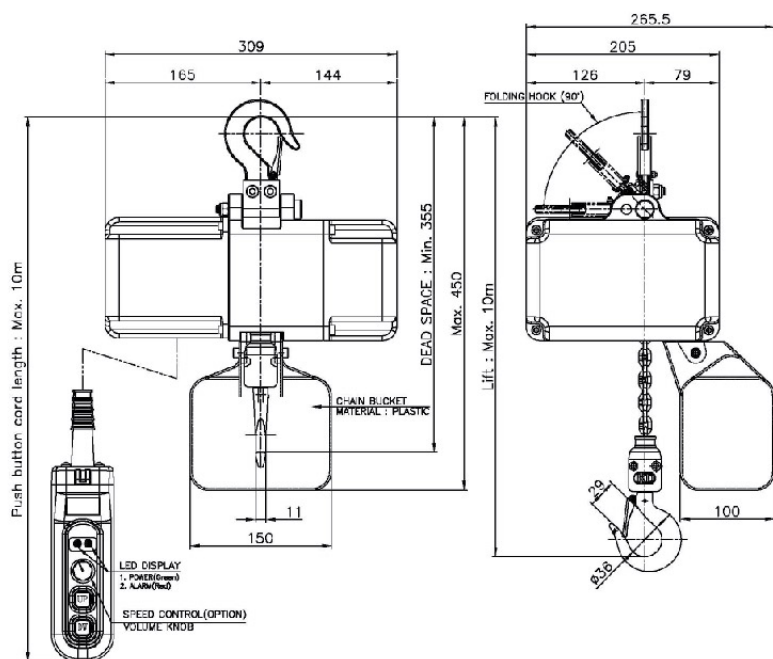
BODY Assembly

NO	DESCRIPTION	MATERIAL	QTY	SIZE	REMARK
A00	MAIN BODY Sub Assy		1	MN-250	
B00	REDUCER CASE Sub Assy		1	MN-250	
B09	O-RING	PUR.	1	P28x3.5	
B10	TORQUE CONTROL CAP	S45C	1	Ø40x13.5	
C05	CHAIN BUCKET	PLASTIC	1	100X150X120(L170L)	
C06	SOCKET HEAD CAP BOLT	PUR.	1	M6x55	
C07	LOCK NUT	PUR.	1	M6	
C08	LOAD CHAIN	AISI15B24	-	Ø4x15	
E00	CONTROL PART Sub Assy		1	MN-250	
H00	BOTTOM HOOK Sub Assy		1	MN-250	250kg/125kg
H08	SLIP CUSHION	URETHAN	1	Ø22x12.4	URETHAN+STEEL WASHER
H09	CHAIN STOP HOLDER B	SGP	3	Ø21.7x2.6Tx25L	
H10	CHAIN STOP HOLDER A	S45C	1	250kg(125kg)	
H11	SOCKET HEAD CAP BOLT	PUR.	1	M5x25	
H12	LOCK NUT	PUR.	1	M5	
T00	TOP HOOK Sub Assy		1	MN-250	250kg/125kg
T08	TOP HOOK PIN	S45C	1	Ø20x90L	
T09	LOCK NUT	PUR.	1	M8	
P00	PUSH BUTTON Sub Assy		1	MN-250	
OIL	GEAR OIL	PUR.	1	250cc	TECTYL GEAR 220

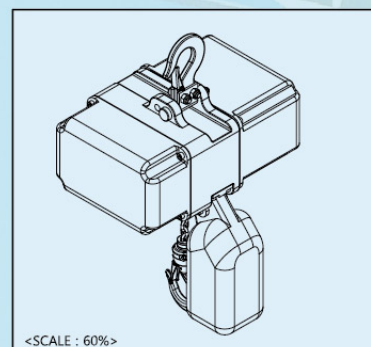
MINI Electric Chain Hoist MN Type



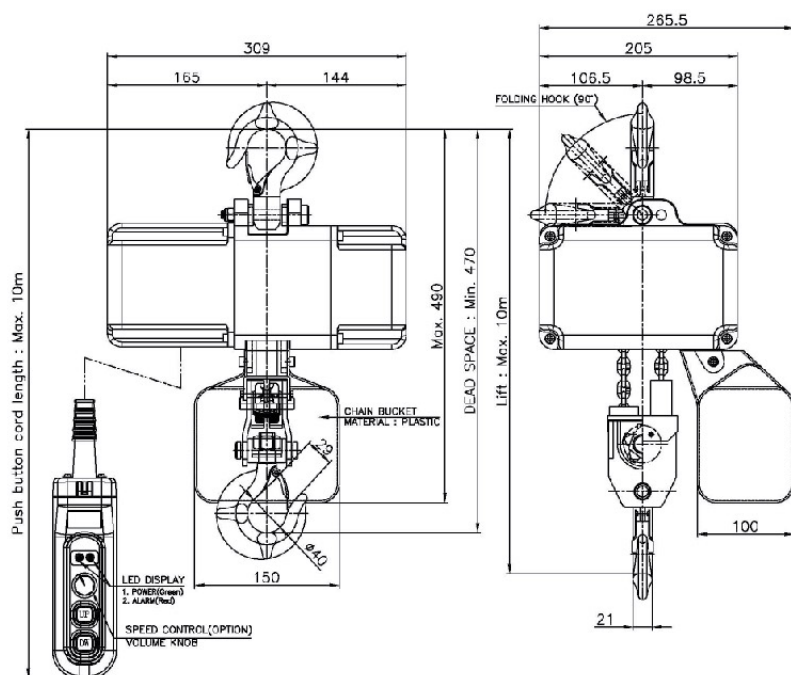
MN-125/250



MODEL	MN-125(250)	
CAPACITY	125(250) kg	
TEST LOAD	156(313) kg	
LIFT	Max 10m	
HOISTING	MOTOR	BLDC 400w
	SPEED	10m/min
	SPEED CONTROL	Max 12m/min(Variable Option)
BRAKE	MECHANICAL BRAKE	
SAFETY DEVICE	SLIP CLUTCH SYSTEM	
POWER SOURCES	AC 1Ø 220V 50/60Hz	
OPERATION METHOD	PUSH BUTTON SWITCH TYPE ON FL	
LED DISPLAY	POWER(green) & ALARM(red)	
OPERATING TEMPERATURE	-10°C ~ 40°C	
International Protection	54	
LOAD CHAIN	Ø4.0 x P12.0mm x 1fall	
PAINT COLOR	10B 3/5	
NET WEIGHT	Max 19 kg	



MN-490/500



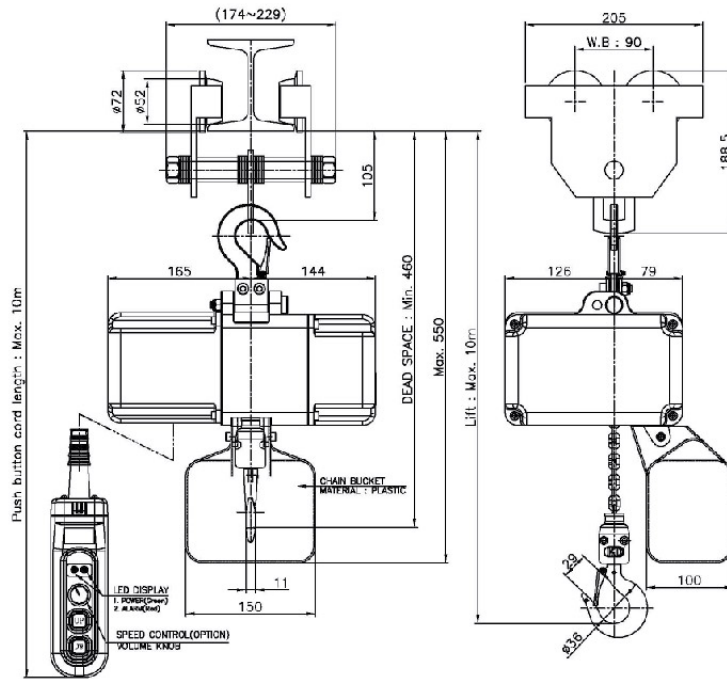
MODEL	MN-490(500)	
CAPACITY	490(500) kg	
TEST LOAD	612(625) kg	
LIFT	Max 10m	
HOISTING	MOTOR	BLDC 400w
	SPEED	5m/min
	SPEED CONTROL	Max 6m/min(Variable Option)
BRAKE	MECHANICAL BRAKE	
SAFETY DEVICE	SLIP CLUTCH SYSTEM	
POWER SOURCES	AC 1Ø 220V 50/60Hz	
OPERATION METHOD	PUSH BUTTON SWITCH TYPE ON FL	
LED DISPLAY	POWER(green) & ALARM(red)	
OPERATING TEMPERATURE	-10°C ~ 40°C	
International Protection	54	
LOAD CHAIN	Ø4.0 x P12.0mm x 2fall	
PAINT COLOR	10B 3/5	
NET WEIGHT	Max 25 kg	

※ Option : 가변형 권상속도
(VARIABLE HOISTING SPEED)

MINI Electric Chain Hoist MNP Type

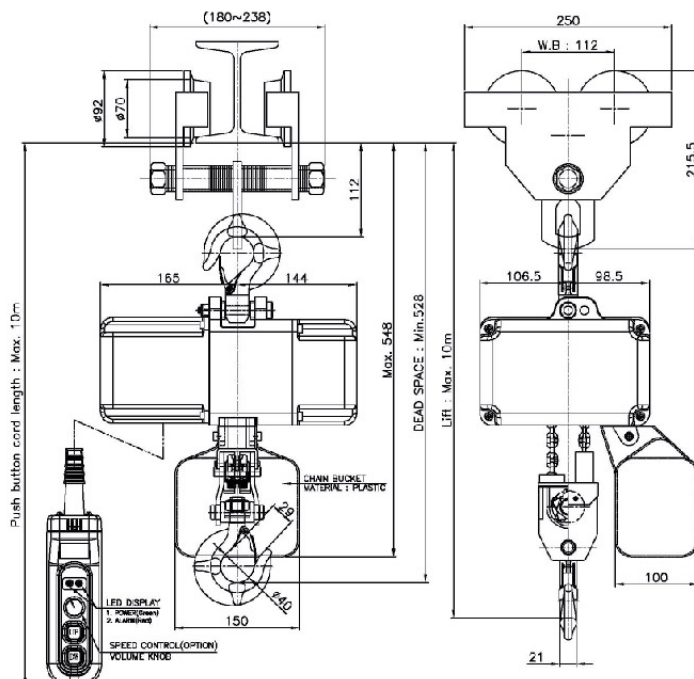


MNP-125/250



MODEL	MNP-125(250)	
CAPACITY	125(250) kg	
TEST LOAD	156(313) kg	
LIFT	Max. 10m	
HOISTING	MOTOR	BLDC 400w
	SPEED	10m/min
	SPEED CONTROL	Max. 12m/min(Variable Option)
BRAKE	MECHANICAL BRAKE	
SAFETY DEVICE	SLIP CLUTCH SYSTEM	
POWER SOURCES	AC 1Ø 220V 50/60Hz	
OPERATION METHOD	PUSH BUTTON SWITCH TYPE ON FL	
LED DISPLAY	POWER(green) & ALARM(red)	
OPERATING TEMPERATURE	-10°C ~ 40°C	
International Protection	54	
LOAD CHAIN	Ø4.0 x P12.0mm x 1fall	
I-BEAM WIDTH	78 ~ 133mm	
Min. RADIUS of CURVE	900mm	
PAINT COLOR	10B 3/5	
NET WEIGHT	Max. 26 kg	

MNP-490/500



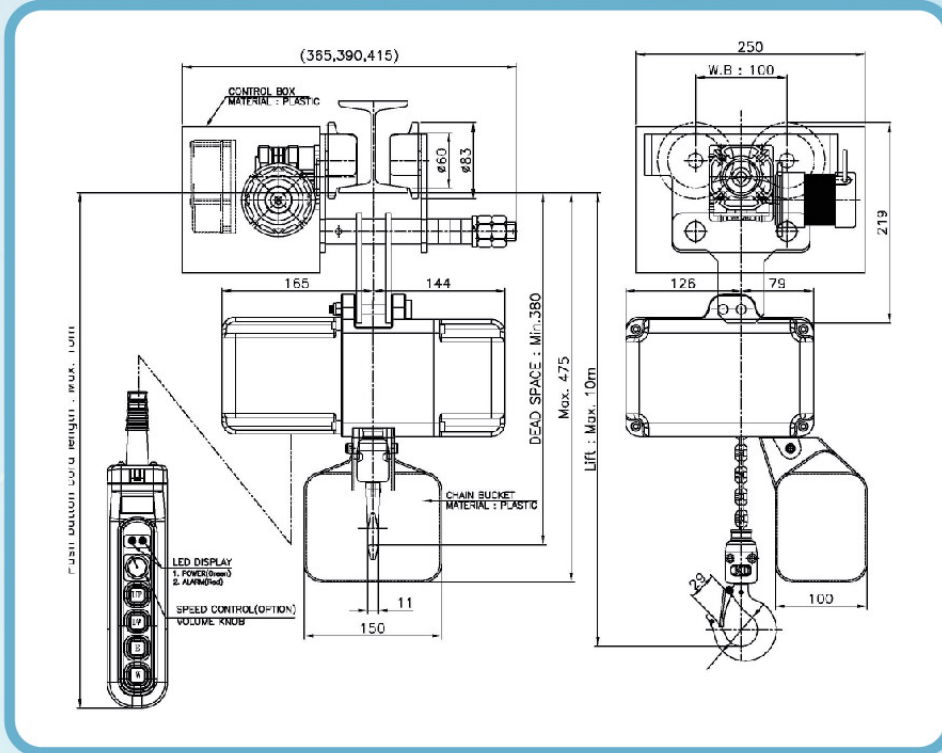
MODEL	MNP-490(500)	
CAPACITY	490(500) kg	
TEST LOAD	612(625) kg	
LIFT	Max. 10m	
HOISTING	MOTOR	BLDC 400w
	SPEED	5m/min
	SPEED CONTROL	Max. 6m/min(Variable Option)
BRAKE	MECHANICAL BRAKE	
SAFETY DEVICE	SLIP CLUTCH SYSTEM	
POWER SOURCES	AC 1Ø 220V 50/60Hz	
OPERATION METHOD	PUSH BUTTON SWITCH TYPE ON FL	
LED DISPLAY	POWER(green) & ALARM(red)	
OPERATING TEMPERATURE	-10°C ~ 40°C	
International Protection	54	
LOAD CHAIN	Ø4.0 x P12.0mm x 2fall	
I-BEAM WIDTH	68 ~ 126mm	
Min. RADIUS of CURVE	900 mm	
PAINT COLOR	10B 3/5	
NET WEIGHT	Max. 37 kg	

※ Option : 가변형 권상속도
(VARIABLE HOISTING SPEED)

MINI Electric Chain Hoist MNM Type

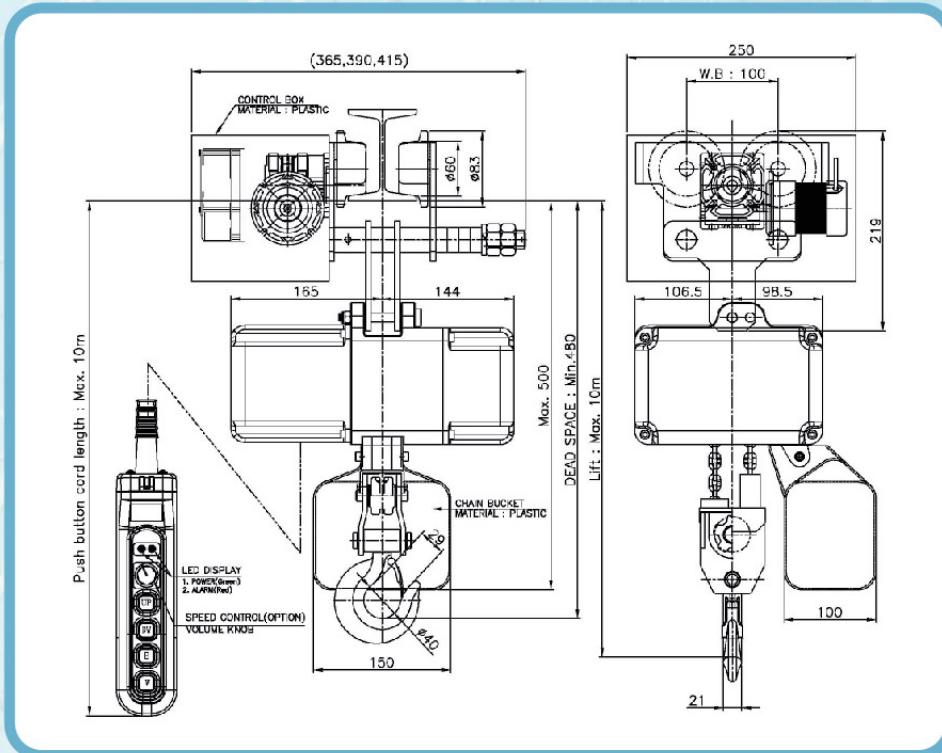


MNM-125/250



MODEL	MNM-125(250)	
CAPACITY	125(250) kg	
TEST LOAD	156(313) kg	
LIFT	Max. 10m	
HOISTING	MOTOR	BLDC 400w
	SPEED	10m/min
TRAVERSING	MOTOR	BLDC 80w
	SPEED	12m/min
	SPEED CONTROL	Max. 14m/min(Variable Option)
BRAKE	MECHANICAL BRAKE	
SAFETY DEVICE	SLIP CLUTCH SYSTEM	
POWER SOURCES	AC 1Ø 220V 50/60Hz	
OPERATION METHOD	PUSH BUTTON SWITCH TYPE ON FL	
LED DISPLAY	POWER(green) & ALARM(red)	
OPERATING TEMPERATURE	-10°C ~ 40°C	
International Protection	54	
LOAD CHAIN	Ø4.0 x P12.0mm x 1fall	
I-BEAM WIDTH	75, 100, 125mm	
Min. RADIUS of CURVE	900mm	
PAINT COLOR	10B 3/5	
NET WEIGHT	Max. 40 kg	

MNM-490/500



MODEL	MNM-490(500)	
CAPACITY	490(500) kg	
TEST LOAD	612(625) kg	
LIFT	Max. 10m	
HOISTING	MOTOR	BLDC 400w
	SPEED	5m/min
TRAVERSING	MOTOR	BLDC 80w
	SPEED	12m/min
	SPEED CONTROL	Max. 14m/min(Variable Option)
BRAKE	MECHANICAL BRAKE	
SAFETY DEVICE	SLIP CLUTCH SYSTEM	
POWER SOURCES	AC 1Ø 220V 50/60Hz	
OPERATION METHOD	PUSH BUTTON SWITCH TYPE ON FL	
LED DISPLAY	POWER(green) & ALARM(red)	
OPERATING TEMPERATURE	-10°C ~ 40°C	
International Protection	54	
LOAD CHAIN	Ø4.0 x P12.0mm x 2fall	
I-BEAM WIDTH	75, 100, 125mm	
Min. RADIUS of CURVE	900 mm	
PAINT COLOR	10B 3/5	
NET WEIGHT	Max. 45 kg	

※ Option : 가변형 권상속도
(VARIABLE HOISTING SPEED)

MN type

Available from 125kg to 500kg capacity



MN type

- Hoist classification : FEM(1Bm)/ISO(M3)
- Motor class : "B" class
- Ambient temperature : -10°C ~ +40°C
- Intermittent Rating(%ED) : 30%ED

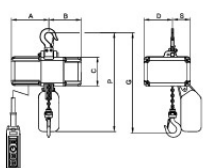
- BLDC motor (Hoisting 400w, Traversing 80w)
- Mechanical brake combined with slip clutch system
- Variable speed control (Max 12.0m/min)
- Variable & useful service
- Easy handle & Easy installation & Easy carry
- Super light weight(18kg)
- Single phase hoist

I STANDARD SPECIFICATION

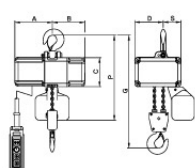
Model	Capacity (kg)	Lift (m)	Duty rating (min)	Lifting Speed (m/min)				Traversing Speed (m/min)		Load Chain Dia. (mm)	No. of Falls of Load Chain	Test Load (kg)
				Single		Variable		Single	Variable			
				50Hz	60Hz	50Hz	60Hz					
MN	125	4	30	10		<12		-	-	∅4	1	156
	250	4	30	10		<12		-	-	∅4	1	313
	500 (490)	4	30	5		<6		-	-	∅4	2	625 (612)
MNP	125	4	30	10		<12		-	-	∅4	1	156
	250	4	30	10		<12		-	-	∅4	1	313
	500 (490)	4	30	5		<6		-	-	∅4	2	625 (612)
MNM	125	4	30	10		<12		12	<14	∅4	1	156
	250	4	30	10		<12		12	<14	∅4	1	313
	500 (490)	4	30	5		<6		12	<14	∅4	2	625 (612)
Capacity (kg)	Output (kw)		Traversing (kw)	Net weight (kg)			Extra weight per 1m lift (kg)					
	Single	Dual		MN	MNP	MNM	MN	MNP	MNM			
125		0.4	0.08	18	26	39			0.4			
250		0.4	0.08	18	26	39			0.4			
500 (490)		0.4	0.08	25	32	45			0.8			

I DIMENSION

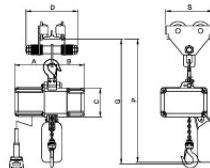
Model	Capacity (kg)	Dimension (mm)							Std.I-Beam Width (mm)	Min. Radius of Curve (mm)
		A	B	C	D	G	P	S		
MN	125	165	144	130	126	min. 355	max. 450	79	-	-
	250	165	144	130	126	min. 355	max. 450	79	-	-
	500 (490)	165	144	130	106.5	min. 470	max. 490	98.5	-	-
MNP	125	165	144	130	174-229	min. 460	max. 550	205	78-133	900
	250	165	144	130	174-229	min. 460	max. 550	205	78-133	900
	500 (490)	165	144	130	180-238	min. 528	max. 548	250	68-126	900
MNM	125	165	144	130	365,390,415	min. 380	max. 475	250	75, 100, 125	900
	250	165	144	130	365,390,415	min. 380	max. 475	250	75, 100, 125	900
	500 (490)	165	144	130	365,390,415	min. 480	max. 500	250	75, 100, 125	900



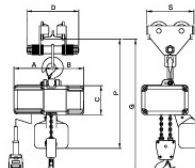
MN-125/250



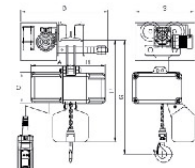
MN-500(490)



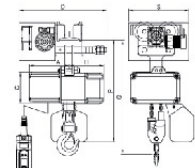
MNP-125/250



MNP-500(490)



MNM-125/250



MNM-500(490)