



KUKDONG

ELECTRIC CHAIN HOIST

“MN TYPE”

OPERATING & MAINTENANCE MANUAL



KUKDONG HOIST CO., LTD.

<http://www.kdhoist.com>


Contents

1. How to use MN type		
1-1. Conditions	-----	3
1-2. Model (Type)	-----	3
2. How to treat MN type		
2-1. Checking points before installation	-----	3
2-2. Chain bucket	-----	3
2-3. Wiring	-----	4
2-4. Warning points after installation	-----	4
2-5. Warning points in use	-----	5
3. Maintenance and Inspection		
3-1. Inspection before use (Daily inspection)	-----	6
3-2. Periodical inspection (Monthly, Yearly)	-----	7
3-3. Checking points of hoist	-----	7
3-4. Checking points of trolley	-----	8
3-5. Test points after periodical inspection	-----	8
3-6. Checking points of refueling and lubrication	-----	8
3-7. Inspection of hook and load chain	-----	9
3-8. First-aid	-----	9
4. How to connect trolley		
4-1. How to connect trolley and MN type (Pin type)	-----	10
4-2. How to connect trolley and MN type (HOOK type)	-----	10
4-3. How to install trolley on the runway beam	-----	10
4-4. How to connect electric power source	-----	11
5. Drawing		
5-1. MN-125/250 (HOOK SUSPENSION type)	-----	13
5-2. MN-500 (HOOK SUSPENSION type)	-----	14
5-3. MNP-125/250 (PLAIN TROLLEY type)	-----	15
5-4. MNP-500 (PLAIN TROLLEY type)	-----	16
5-5. MNM-125/250 (MOTORIZED TROLLEY type)	-----	17
5-6. MNM-500 (MOTORIZED TROLLEY type)	-----	18
6. Circuit diagram		
6-1. MN type (STANDARD type)	-----	19
6-2. MNV type (VARIABLE SPEED type)	-----	20
7. Part list	-----	21
8. Exploded View	-----	23

1. How to use MN type

1-1 Conditions

Periodical inspection and maintenance of a hoist after installation can help you use the hoist for long time without any problems. But unreasonable use of the hoist regardless to conditions can cause its breakdown.

 **Please read the manual before using the hoist surely.**


1-2 Model(Type) - Standard specification

HOOK SUSPENSION TYPE	PLAIN TROLLEY TYPE	MOTORIZED TROLLEY TYPE
• MN-125(250)	• MNP-125(250)	• MNM-125(250)
• MN-500	• MNP-500	• MNM-500

2. How to treat MN type

2-1 Checking points before installation

- 1. Type
- 2. Capacity
- 3. Lift
- 4. Power source
- 5. Push button switch's length
- 6. Chain bucket's size
- 7. When placing order for special type, please purchase after checking the requirement
- 8. When using trolley, please check a kinds of beam ("I-beam" or "H-beam")

 Please refer to page 10,11, 12 about how to connect trolley

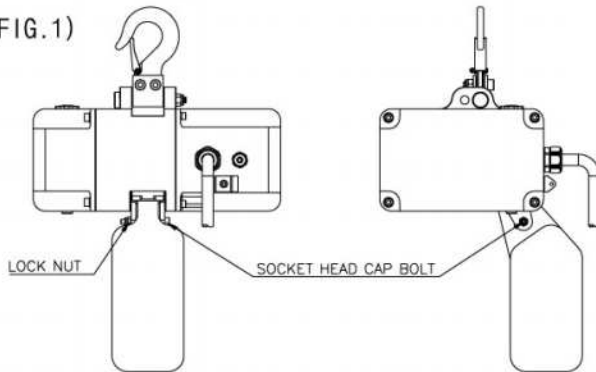
2-2 Chain bucket

* Please use the standard chain bucket surely.

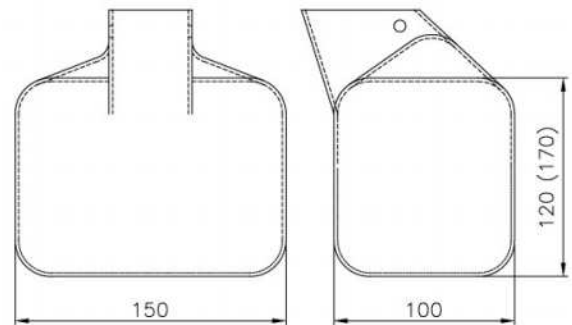
It is caused by breaking and deformation of load chain.(Fig. 2)

* Please refer to Fig. 1 about how to install chain bucket.

(FIG.1)



(FIG.2)



N.B) 1. Chain bucket is made of plastic or CANVAS.

2-3 Wiring

1. Cable for power source consists of VCTFK 0.75mm² and Plug.
2. In case of such a long distance between hoist and power source, it can be caused no lifting, motor and driver burnt by sudden drop of power.
3. Cable for control is VCT KEVV-HR 0.5mm² x 8C and Max. length is by 10m.
When over 10m, it can be made error of driver.



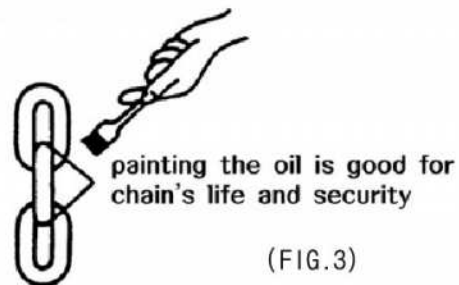
If there is much distance between hoist and power, use the bigger power cable than standard requirements as there may be a drop of electric pressure (Rapid drops or overheating of hoist motor, cable and driver and etc.)

2-4 Warning points after installation

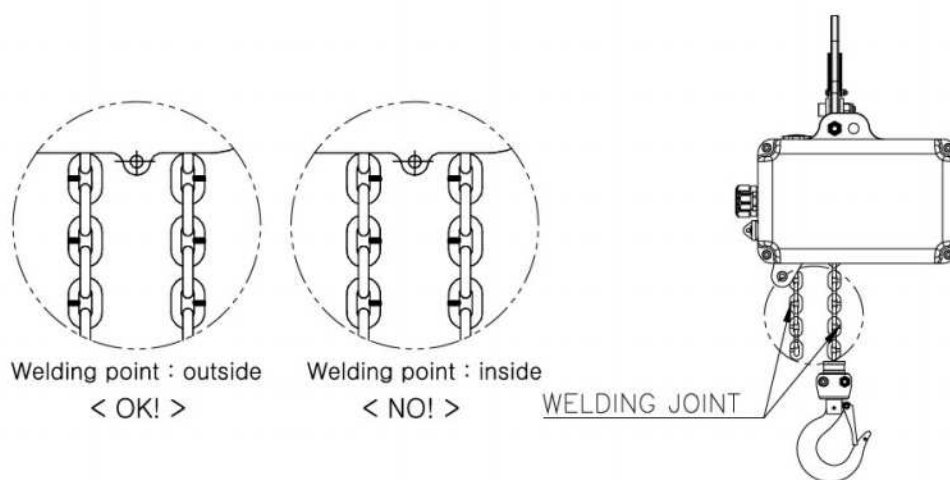
1. Please apply oil on the load chain surely which will lengthen the life span of load chain and prevent troubles (Fig. 3). Also, keep load chain clean all the time or it will cause load chain breaking.



Please do not use grease absolutely.



2. Please assemble the hoist in the way the welding part of the load chain faces the outside lest that part should rub against the load sheave like (Fig. 4). Even When maintenance and exchange of load chain.



2-5. Warning points in use

1. Checking points before operating a hoist surely

⚠ Please do not make a deformation of load chain on purpose

- (1) Is oil applied on the load chain?
- (2) Does it work downward though you press "UP" of push button?
- (3) Does the push button work smoothly?
- (4) Does the role of limit switch work at the stat of unload?
- (5) Does the brake work well without slips? (page 7, Table-1)
- (6) Does a trolley work well without any interference on the monorail beam?

2. Checking points in use

⚠ ※Please observe the followings for safety.

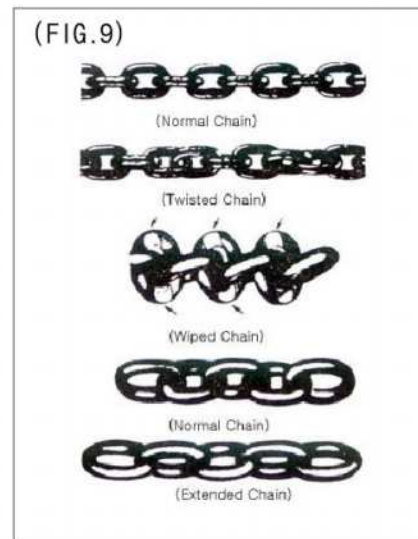
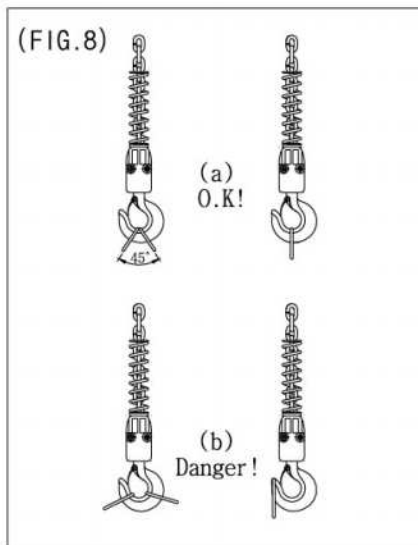
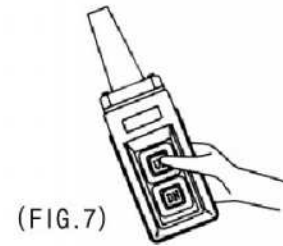
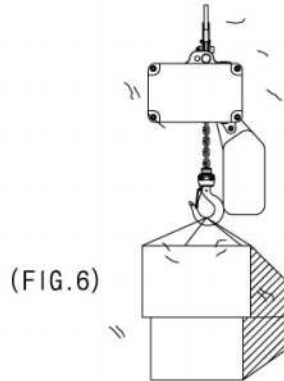
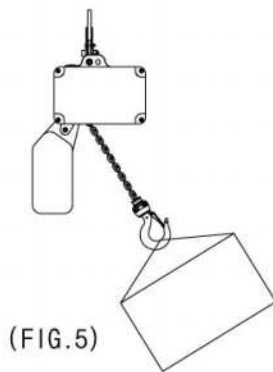
- (1) Don't convert a hoist into a lifter or an elevator for cargo.
- (2) Don't use a hoist to lift up goods slantingly. (Fig. 5)
(If do so, it will cause troubles to a hoist)
- (3) Goods should not exceed the rated load and don't allow anyone to go under loaded goods when a hoist is working. (Fig. 6)

- (4) Never drag the push button cable to move a trolley when you want to connect trolley.
- (5) At normal use, don't use limit switch and slip clutch system. It is a way to prevent breakdown of a hoist.
- (6) Press the push button switch securely and thoroughly. (Fig. 7)
- (7) Put up goods normally to hook block and never use the hoist abnormally. (Fig. 8)
- (8) Don't use the hoist when the load chains are entangled. (Fig. 9)
- (9) Don't do any sudden plugging or continual inching operation.

3. Checking points after using a hoist

- (1) Turn off the power switch and plug off surely after using the hoist.
- (2) Don't stop operating the hoist while it's loaded.

⚠ Be sure to cover a hoist lest rain or water should leak in the hoist when it is installed outside.



3. Maintenance and Inspection

It is very important to check out the hoist daily, monthly and yearly to maintain its long lifespan and be sure to observe the followings for security when one checks out the hoist.

1. Turn off power switch and control power switches with associates.
2. Set the sign of "Repairing" or "Checking" on the hoist while it is under repair.



Never check out the hoist while it is loaded.

3-1. Inspection before use (daily inspection)

1. Checking points before operating a hoist surely
 - (1) Is oil applied on the load chain?
 - (2) Are the load chain entangled?
 - (3) Is safety latch of hook attached normally?
 - (4) Does slip clutch system work normally at the state of unload?
 - (5) Does mechanical brake work normally without slip?
 - (6) Does the trolley work normally?
 - (7) Is the weight of goods loaded on a hoist reasonable?
 - (8) Is it sure that there is no one under loaded goods?

3-2. Periodical inspection (Monthly, Yearly)

Since parts and components of the hoist will wear away and will not work well after lone use, inspect the hoist periodically according to checking points for secure working.

1. Monthly inspection (once a month in the presence of a manager)
2. Yearly inspection (once a year in the presence of a manager and engineer)

3-3. Checking points of hoist

(Table-1)

Part	Checking points	Inspection	Day	Periodical
Main body	External view	No damage, crack and deformation	⊙	⊙
	Abnormal sound	No noises from the motor and the gear	⊙	⊙
	Gear case	No abrasion such as rust, damage and breakdown		⊙
	Reduction gear section	No deformation and breakdown of gear		⊙
		No abrasion deformation of bearing		⊙
Load sheave	No hard abrasion, damages and deformation		⊙	
Load chain	Rust & Cracks	No rust(erosion), cracks(flaws) and few abrasion	⊙	⊙
	Dimensions	Diameter and pitch should be fit to the standard	⊙	⊙
	Oiling	Coated with oil properly	⊙	⊙
Top & bottom hook	Opening	Not get wider than the standards dimension		⊙
	Holders	No harmful damages, deformation and not opening		⊙
	Bottom swivel hook	No problems with bearing		⊙
	Bolts & nuts	No abrasion and curved.		⊙
Limit switch system	Slip clutch	Proper function of the slip clutch Proper function under unload	⊙	⊙
Mechanical brake	Slipping	Within 10mm when you operate hoist 2~3 times with rated load	⊙	⊙
Electric components	Power source cable	No breakage and damages of the rubber covered cables. No disconnection		⊙
	Push button switch	Effective connection and proper functioning	⊙	⊙
	Motor	No overheating and humming		⊙
Others	Joint parts	Bolts, nuts, springs, washers, pins and etc. should be assembled normally		⊙
	Nameplate	Features and specification of hoist should be attached.		⊙
	Chain bucket	Assembled parts should be fixed firmly with bolts.		⊙
		Good conditions and no foreign object in it.		⊙
Lamp	Green	When power turns on		⊙
	Red	When wrong wiring, error, overload and any errors		⊙

3-4 Checking points of trolley

(Table-2)

Part	Checking points	Inspection	Day	Periodical
Plain trolley	Side plates	No bending and damages		⊙
	Joints parts	No looseness breakage and missing and no breaking away from the right place		⊙
	Wheel (Roller)	No abrasion of wheel (Roller) and gear		⊙
		Rotate smoothly	⊙	⊙
		Well lubricated gears		⊙
	Bearing	Proper engagement with shaft and rotate smoothly		⊙
	Name plate	Exact specifications should be written		⊙
Geared trolley	Hand wheel	No excessive wear in the ratcheted section and pocket sections to engage with hand chain.		⊙
	Name plate	Exact specifications should be written		⊙
	Pinion shaft	Well lubricates for smooth rotation		⊙
	Hand chain	No excessive elongation and deformation that cause smooth engagement with the hand wheel pockets		⊙

3-5 Test points after periodical inspection

(Table-3)

Checking points	Inspection
Unloading test	Does the hoist work as the signs of push button indication?
Limit switch test	Does that hoist work normally at that state of unload and the rated load?
Rated loading test	When the hoist works up and down and left and right, are there any noises and vibrations and is there any brake slipping?
Overloading test	Are there any problems at test load?

3-6 Checking points of refueling and lubrication

(Table-4)

No.	Refueling parts	Kind of oil	Refueling time	Amount	Caution
1	Top hook pin Bottom hook block	Cup grease(kixx grease 2)	Yearly	Adequate	
2	Gear section	MACHINE OIL (TECTYL GEAR 220)	Yearly	250CC	Refuel after removing impurity in gear box
3	Load chain	"	Often	Adequate	Oiling on surface of load chain (Not be dried)

Caution) We are using SHELL. In case of using other oil, use same grade like ISO220 grade.

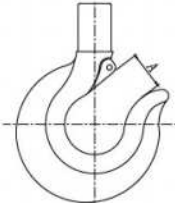
3-7. Inspection of hook and load chain

Hook and load chain can be worn away as time goes by corrode and get wider according to working places and conditions. They are especially important parts for security, so check them based on the Table-5 and Table-6.

Besides, replace them with new ones for secure use when they are more than the using limit dimension.

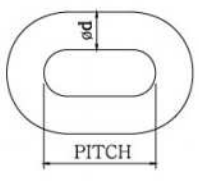
(1) HOOK

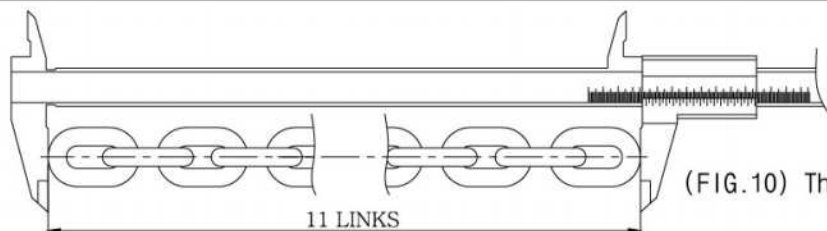
(Table-5)

	The rated load (kg)	Normal dimension (A) (mm)	Using limit dimension (A) (mm)
	125 • 250 500	30	31.5

(2) LOAD CHAIN

(Table-6)

	Model	The rated load (kg)	Diameter Ød (mm)	Normal dimension Pitch (mm)	Using limit dimension 11 links(mm)
	MN TYPE	125 • 250 500	4.0	12.0	138.6



(FIG.10) The measuring way of Load chain

3-8 First-aid

(Table-7)

Conditions	Checking points	Troubles	Solutions
When it does not operate initially	Is power supplied certainly?	Push button does not work.	- Press the push button surely. - Connect wire perfectly.
		Motor generated much heat and many noises.	- Replace or repairing
		The running time of motor is so long	- Call to A/S engineer
In case of stop the motor when a hoist is operation	Imperfect connection	When the power wires, the terminal, switches are not connected perfectly.	- Replacement or Checking
	Overload	Motor stop Red lamp on	- Use it within the range of the rated load - Driver reset
Breaking trouble	The poor braking	Mechanical brake is trouble	- Call to A/S engineer
	Load chain keeps running down slowly		

4. How to connect trolley

When you connect it to Kuk Dong trolley, you can use it in various ways by connection KD type hoists.

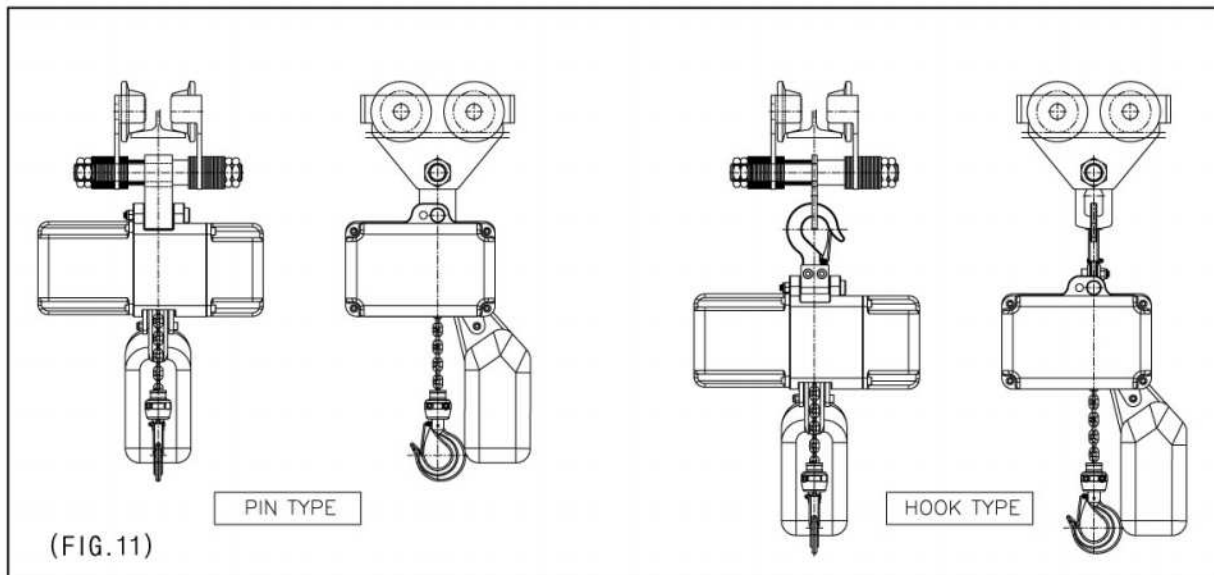
(1) Plain trolley : Model-KPT

4-1. How to connect trolley and MN type hoist (Pin type). (Fig. 11)

1. Disassembling top hook of MN hoist
2. After meet hanger hole of trolley and case hole, removing top hook, the bolt of hook is joined.

4-2. How to connect trolley and MN type hoist (Hook type). (Fig. 11)

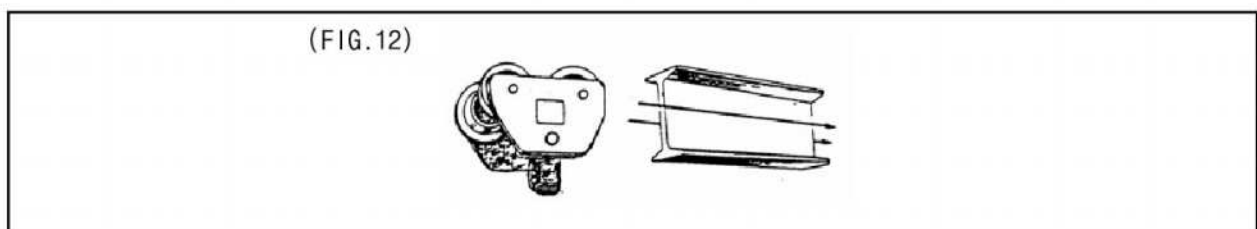
1. Hang top hook on the hole of trolley.



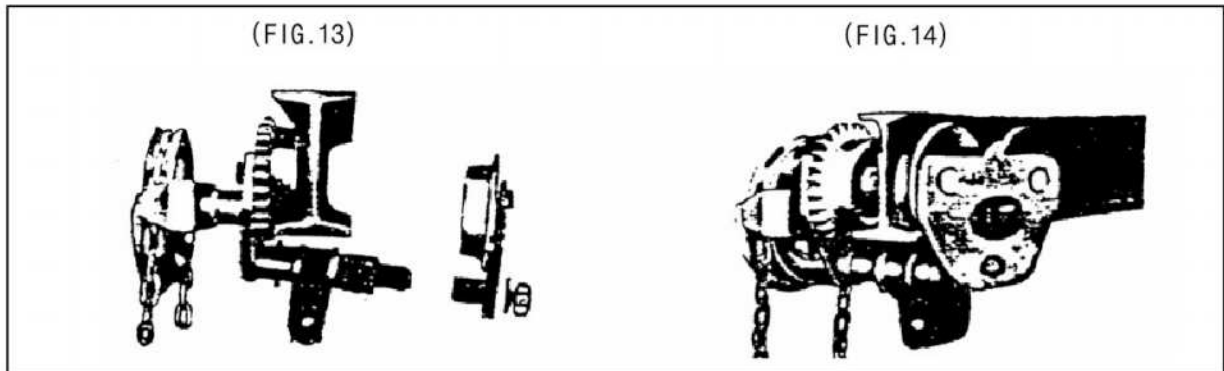
4-3. How to install trolley on the runway beam

When you want to install a trolley on I-beam or H-beam type, set them up in the following way.

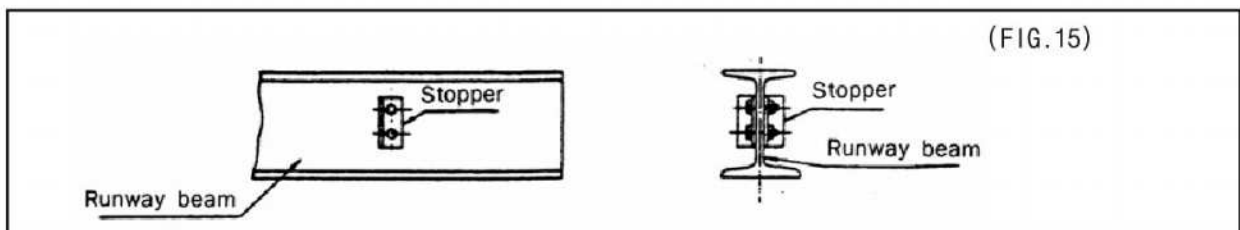
1. Check the width of the beam for running and trolley
(Roller wheels of trolley are divided into two ; one is for I-beam and the other is for H-beam)
2. Assembly them by adjusting the adjusting collar on the stay bolts to the inside or the outside of side place.
3. The simplest way is to install a trolley from the end of the runway beam.(Fig. 12)



4. If you want to install in the center of beam as another way, after unscrewing stay bolts of the trolley and removing the side plate, put a trolley on one end of a beam and set the other side of the side plate to the stay bolt hole and screw them up. (Fig. 13, 14)



⚠ Since the trolley can fall from the runway beam, be sure to attached stoppers to both ends of runway beam. (Fig. 15)

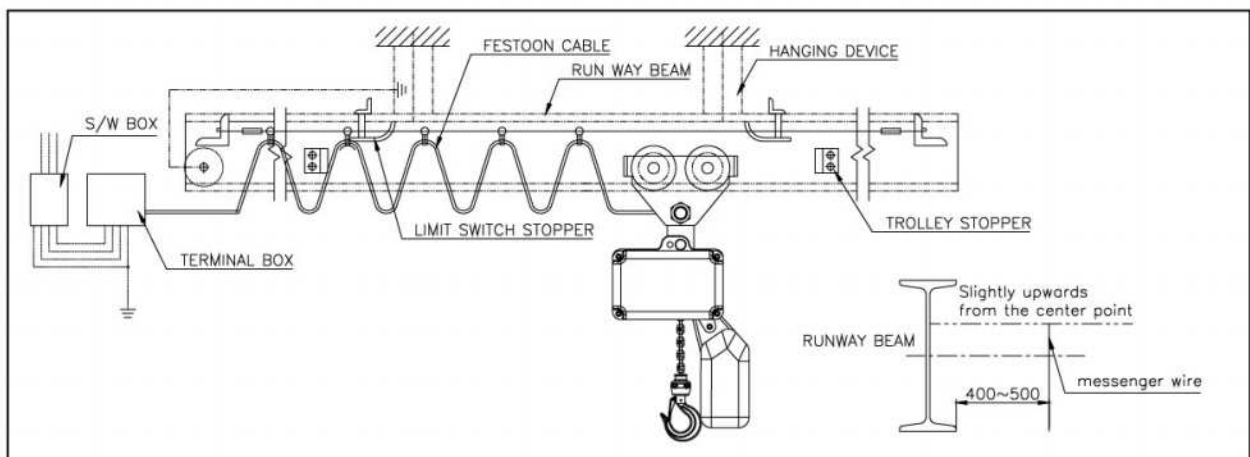


4-4. How to connect electric power source

1. The main power cable should be installed in parallel with the runway beam and the power cable should move together along with a trolley. (Fig. 16)

Install the trolley form the ending part of runway beam.

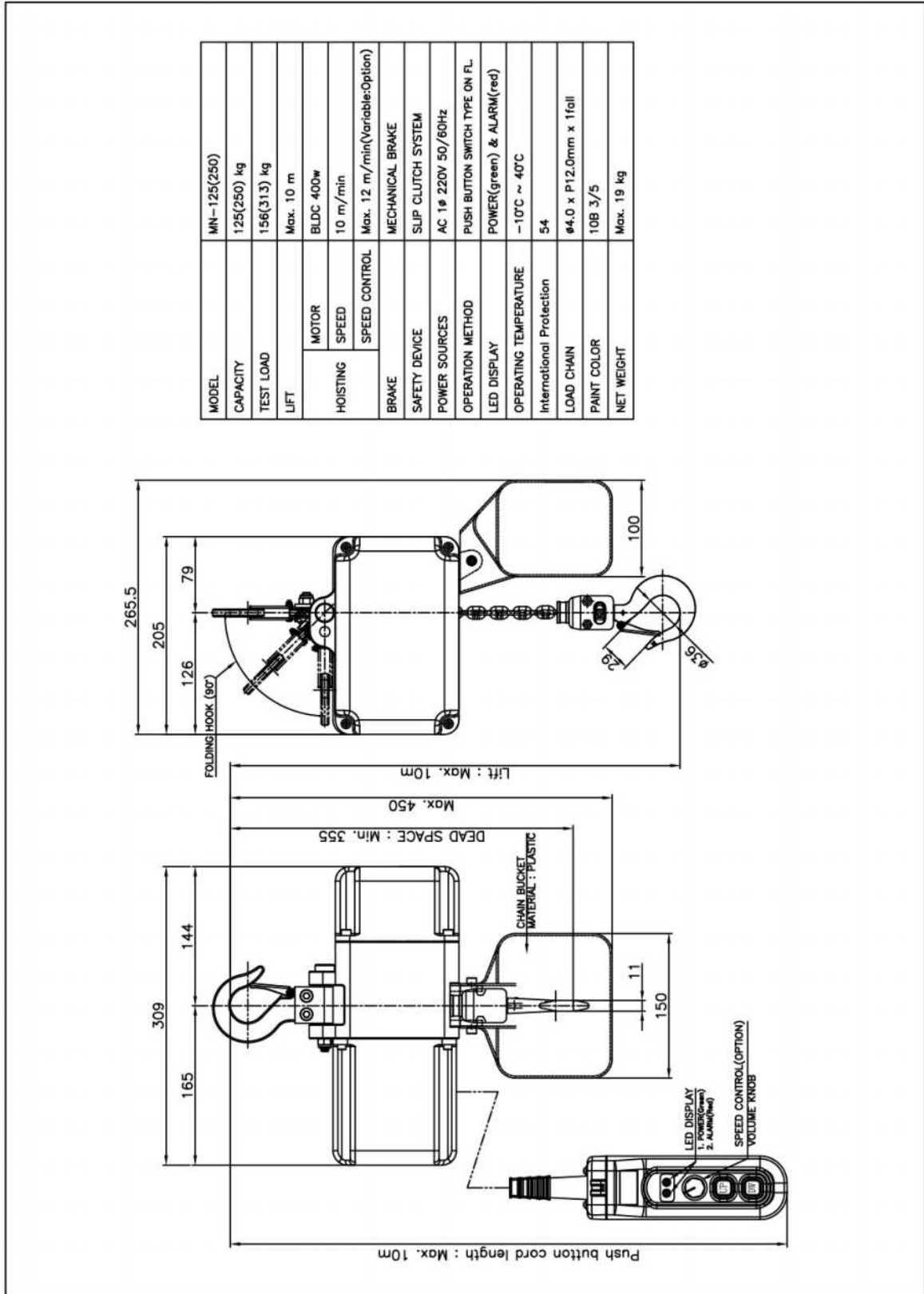
(FIG. 16)



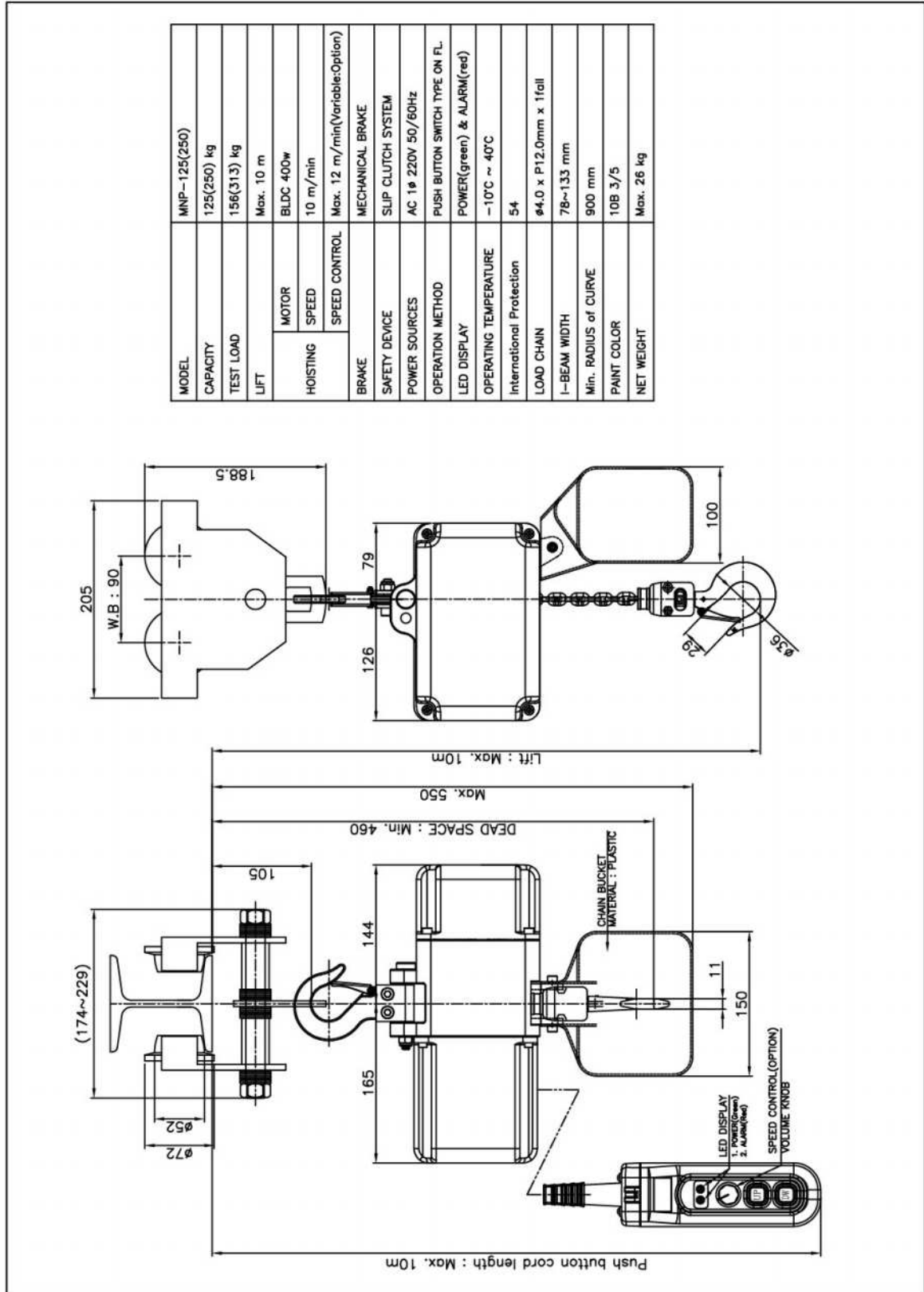
2. The cable wheel should be installed at intervals of 1.5M.
3. The curved runway beam should be installed in a different way. As an instance, the cable wheel is follow the runway beam.
4. Since the rotating radius of curved runway beam is different according to the capacity of hoists, consult with agents or distributors about the specifications of right products suited to your working places.

5. Drawing

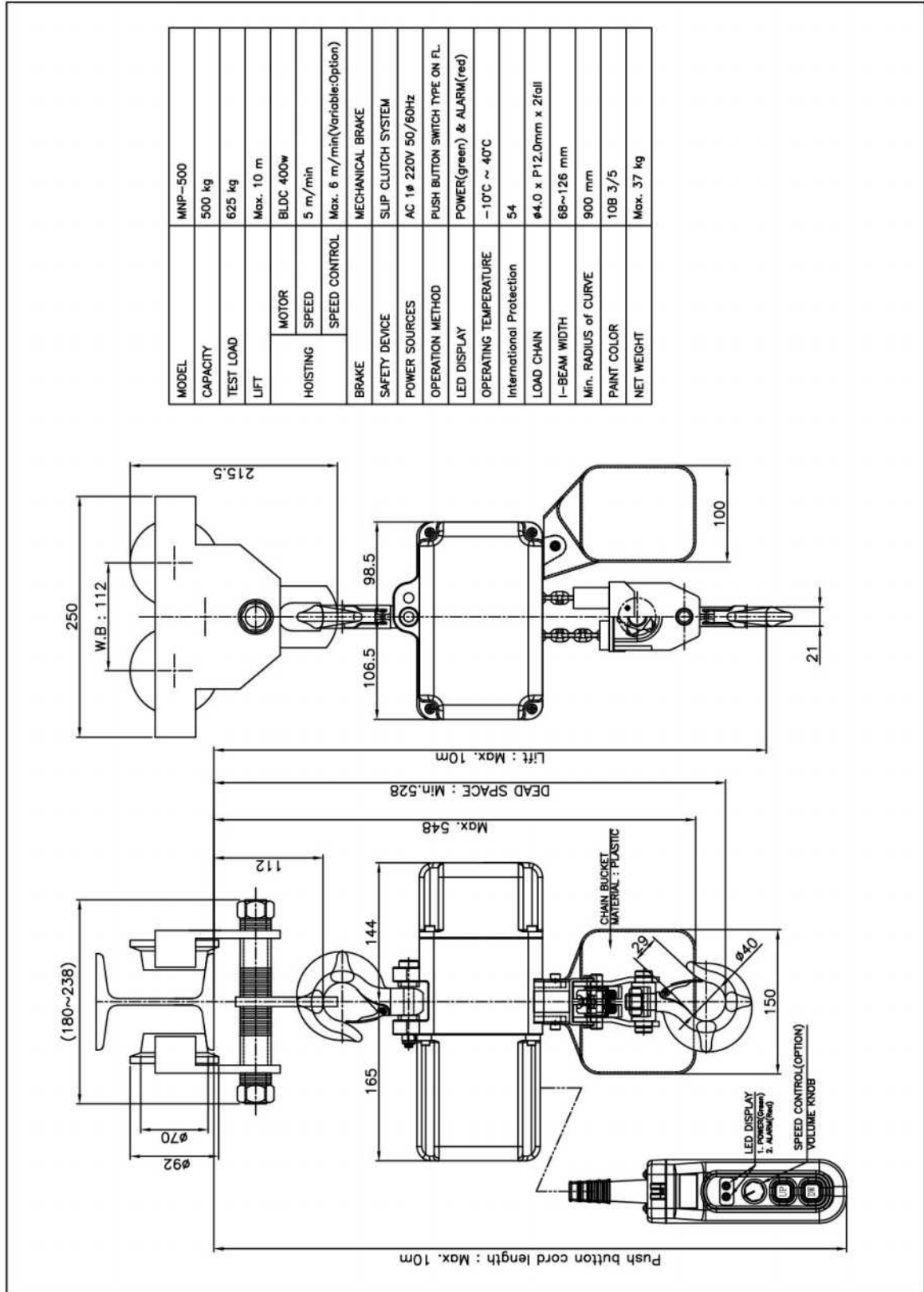
5-1. MN-125/250 (HOOK SUSPENSION TYPE)



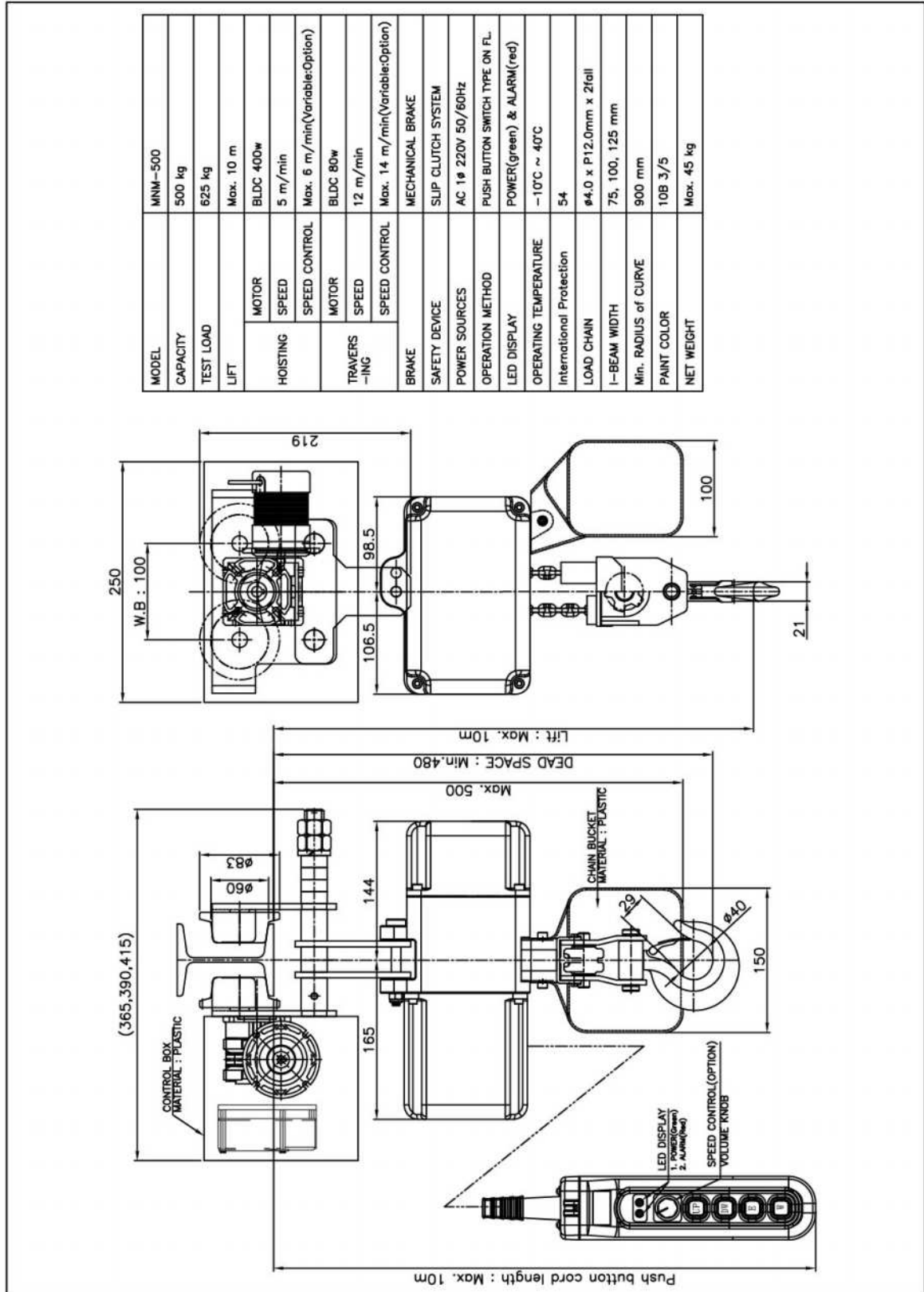
5-3. MNP-125/250 (PLAIN TROLLEY TYPE)



5-4. MNP-500 (PLAIN TROLLEY TYPE)

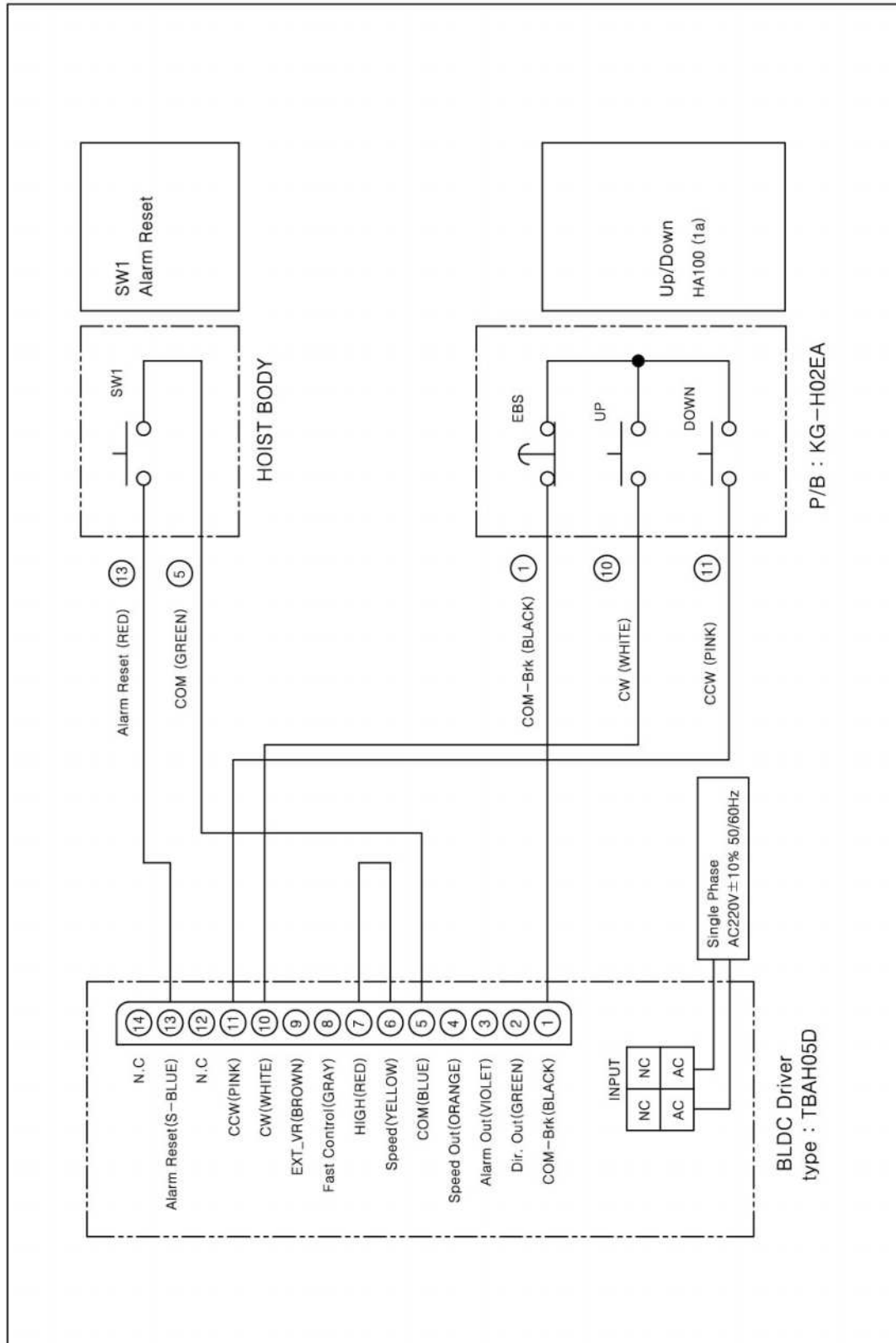


5-6. MNM-500 (MOTORIZED TROLLEY TYPE)

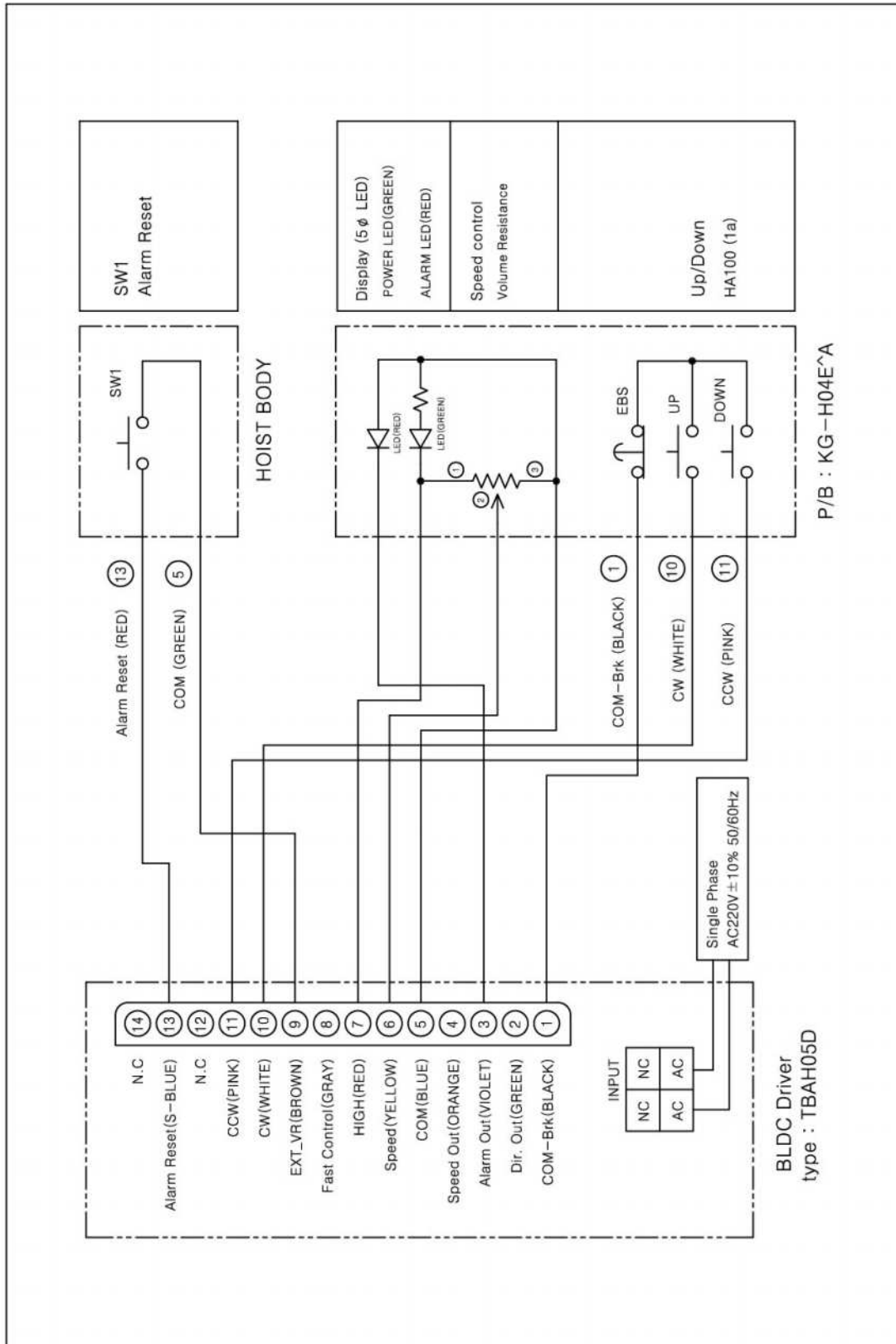


6. Circuit diagram

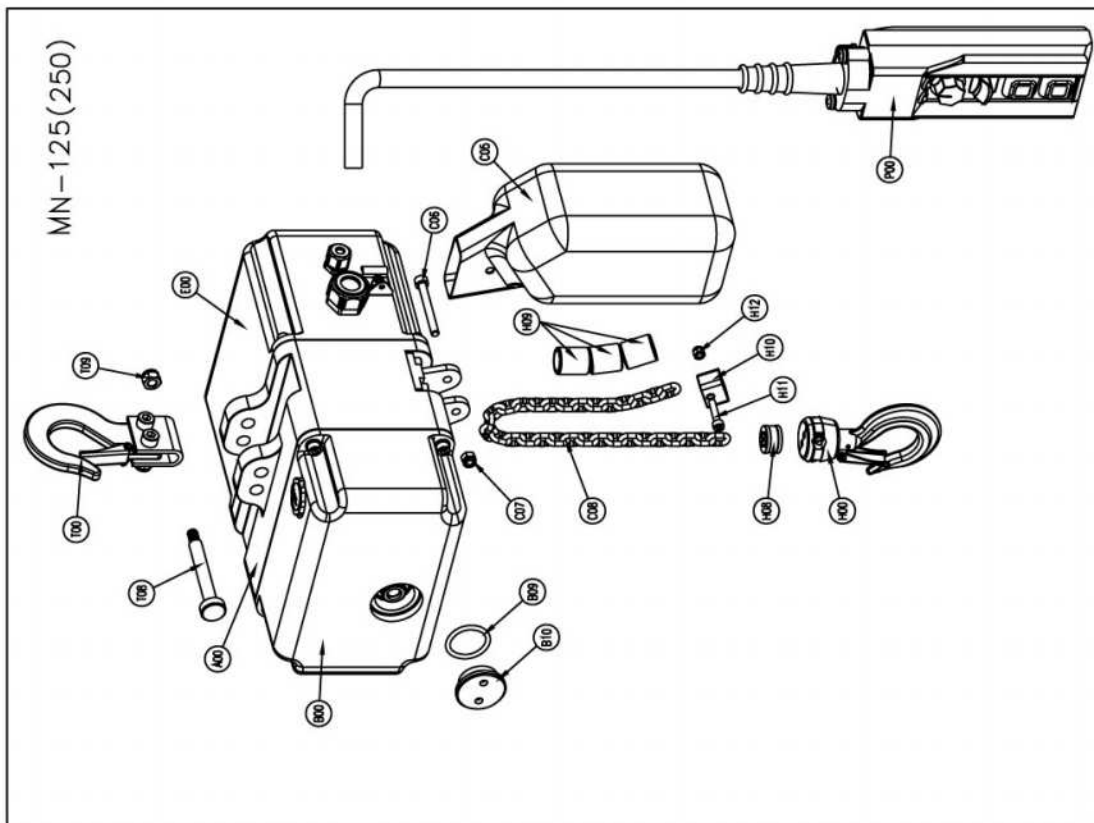
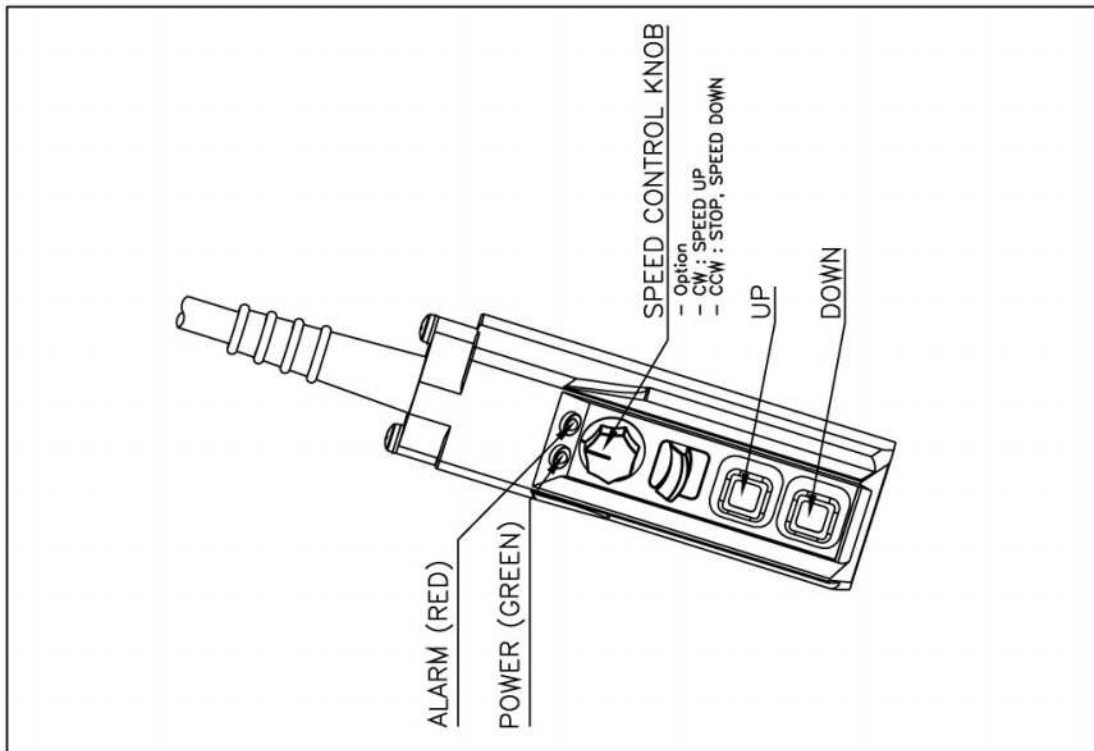
6-1. AC 1Ø 220V 50/60Hz (STANDARD TYPE)



6-2. AC 1Ø 220V 50/60Hz (VARIABLE SPEED TYPE)



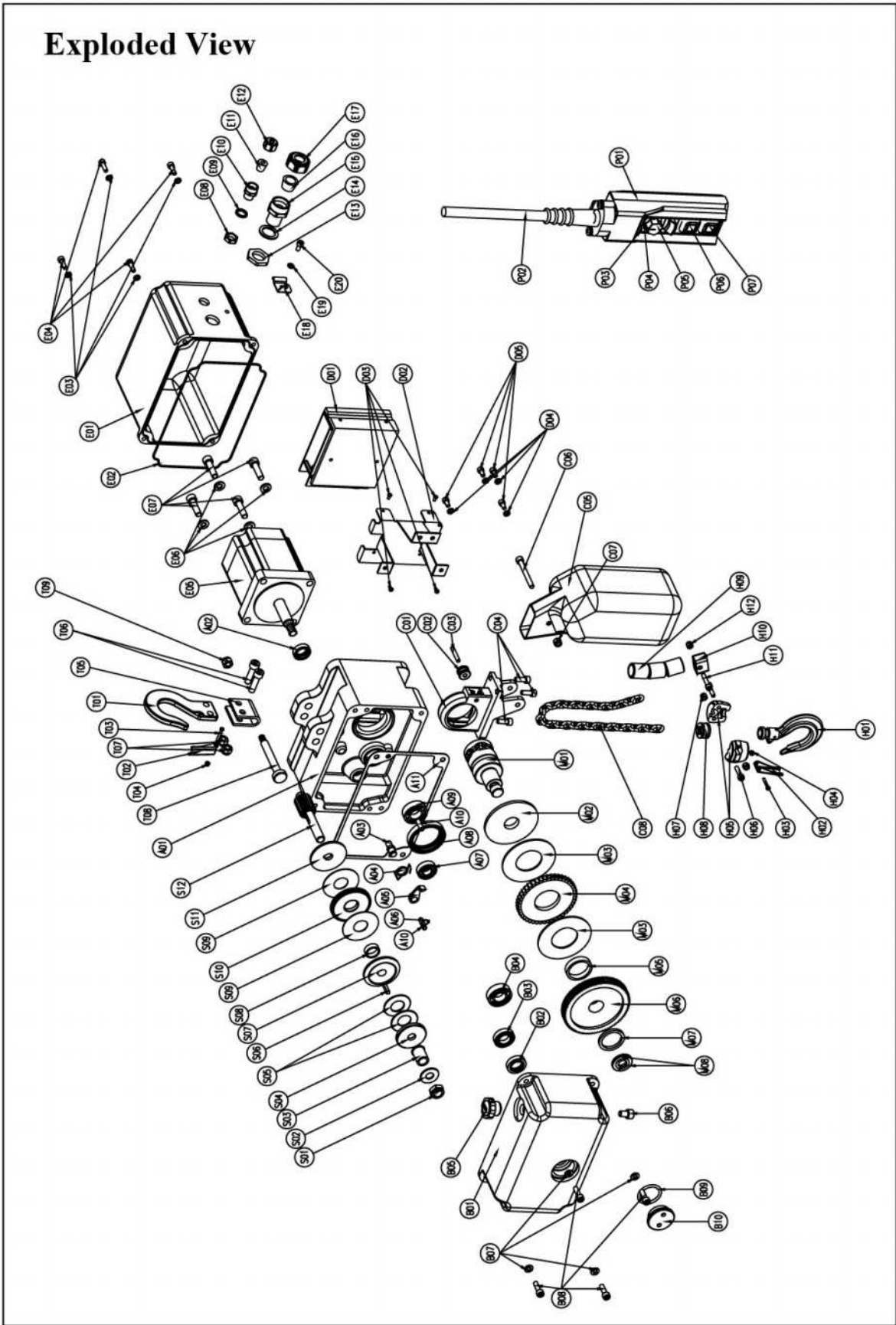
7. Part list

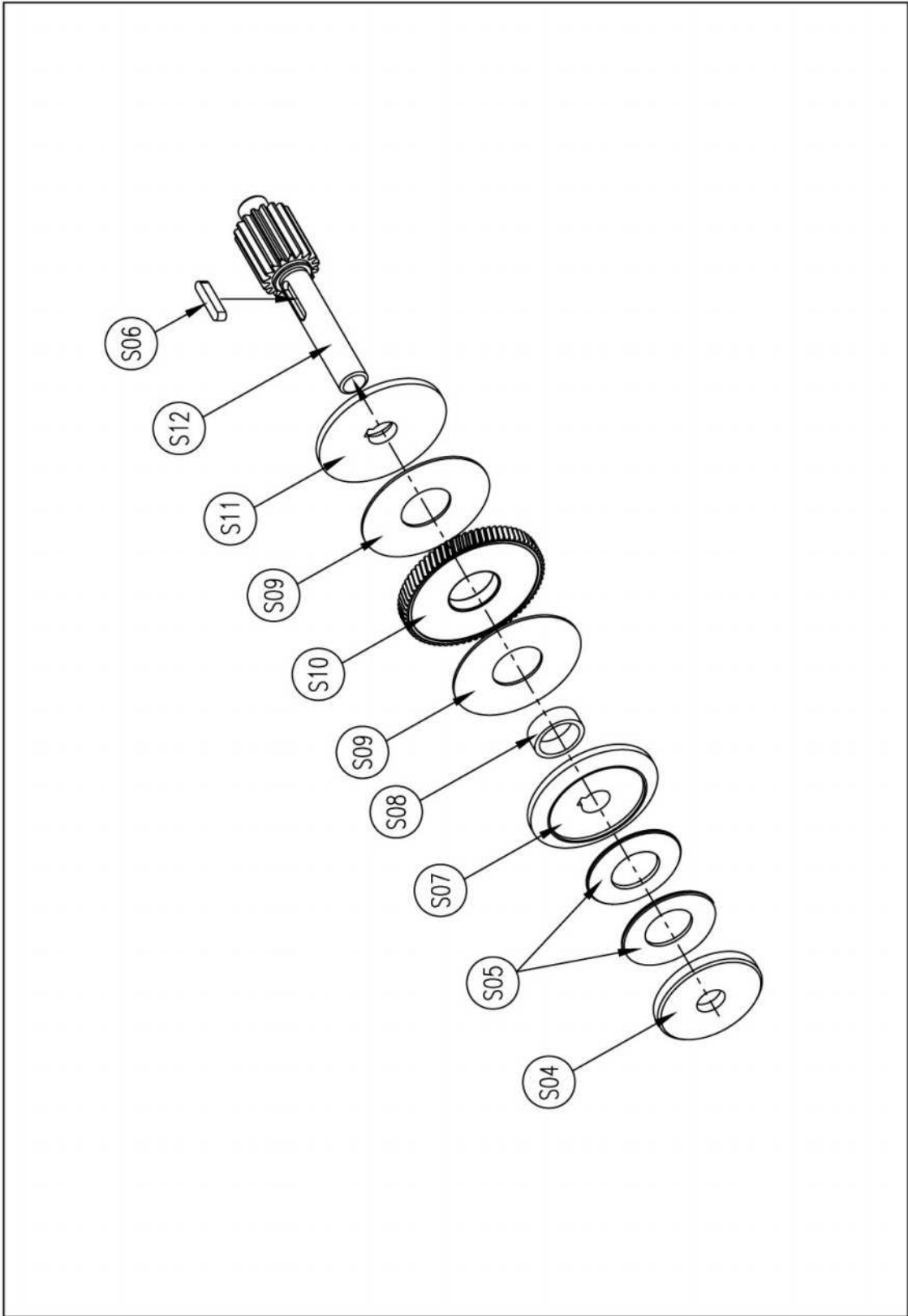


BODY Assembly

NO	DESCRIPTION	MATERIAL	Q'TY	SIZE	REMARK
A00	MAIN BODY Sub Assy		1		
B00	REDUCER CASE Sub Assy		1		
B09	O-RING	PUR.	1	P28x3.5	
B10	TORQUE CONTROL CAP	S45C	1	ø40x13.5	
C05	CHAIN BUCKET	PLASTIC	1	150x100x120(170)L	
C06	SOCKET HEAD CAP BOLT	PUR.	1	M6x55	
C07	LOCK NUT	PUR.	1	M6	
C08	LOAD CHAIN	AISI15B24	-	ø4x15	
E00	CONTROL PART Sub Assy		1		
H00	BOTTOM HOOK Sub Assy		1	MN-125(250)	
H08	SLIP CUSHION	URETHAN	1	ø22x12.4	URETHAN+STEEL WASHER
H09	CHAIN STOP HOLDER B	SGP	3	ø21.7x2.6Tx25L	
H10	CHAIN STOP HOLDER A	S45C	1		
H11	SOCKET HEAD CAP BOLT	PUR.	1	M5x25	
H12	LOCK NUT	PUR.	1	M5	
T00	TOP HOOK Sub Assy		1	MN-125(250)	
T08	TOP HOOK PIN	S45C	1	ø10x85L	R-PIN(SSP-10):2EA
T09	LOCK NUT	PUR.	1	M8	
P00	PUSH BUTTON Sub Assy		1		
OIL	GEAR OIL	PUR.	1	250cc	TECTYL GEAR 220

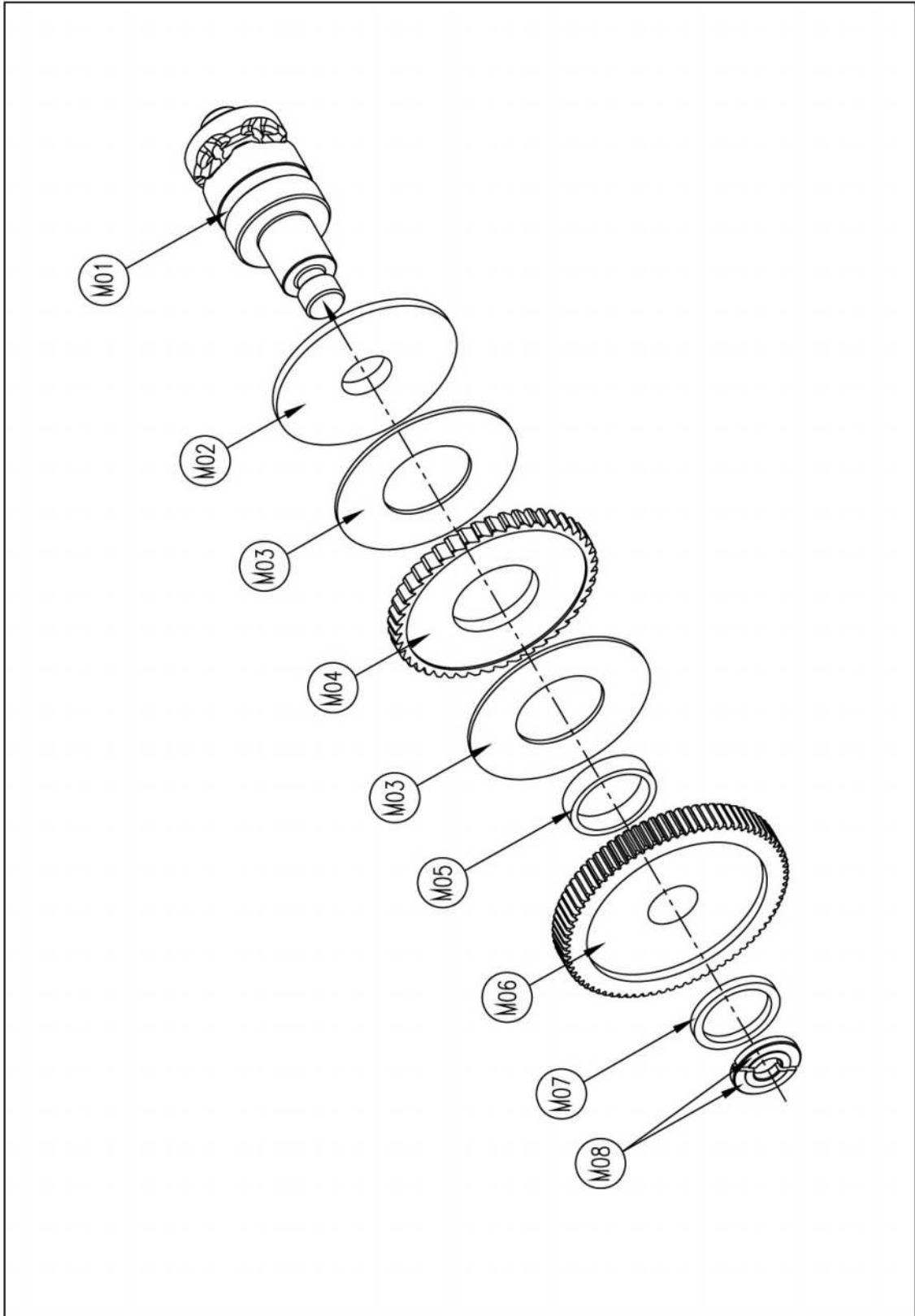
Exploded View





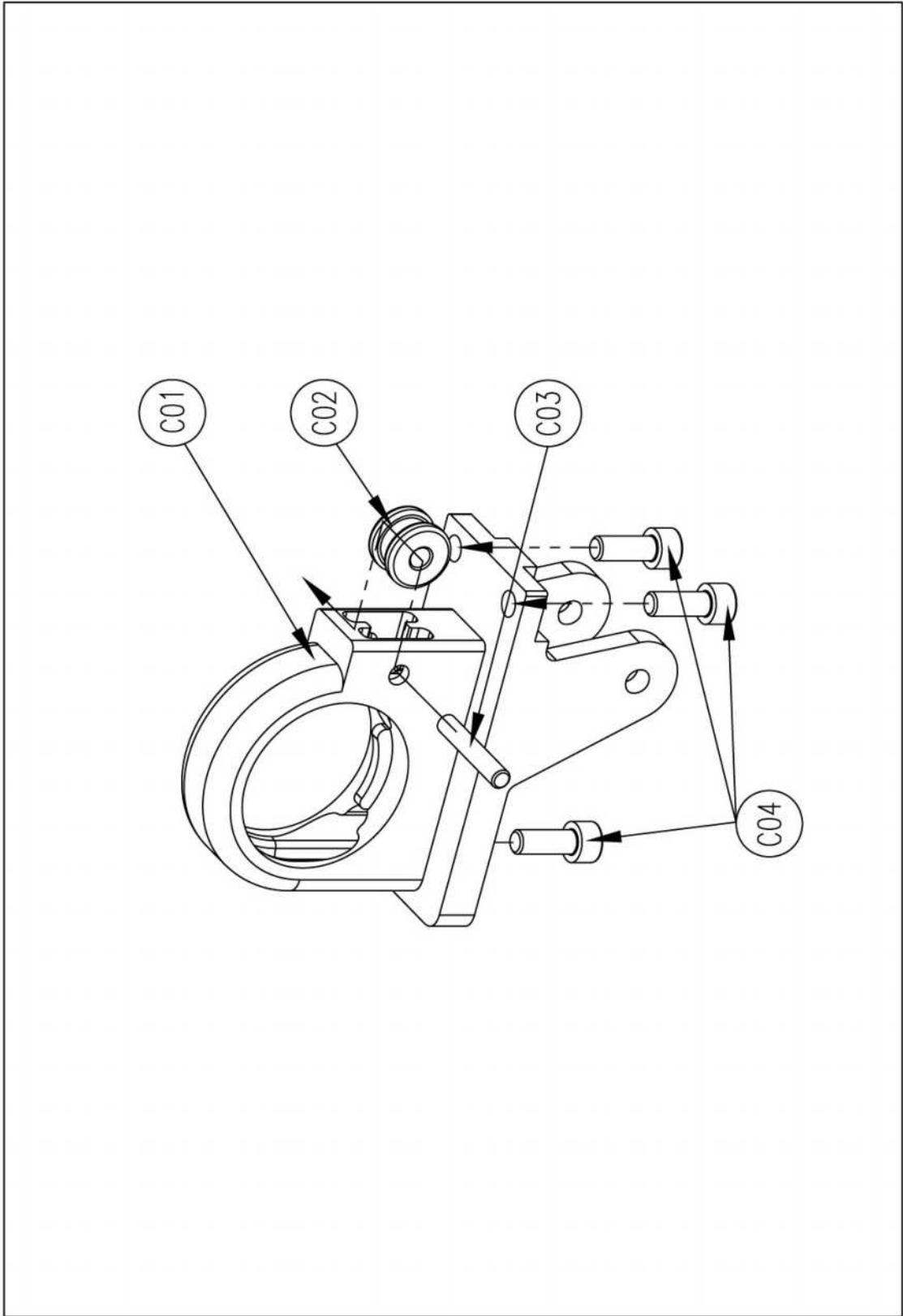
SLIP CLUTCH Sub Assembly

NO	DESCRIPTION	MATERIAL	Q'TY	SIZE	REMARK
S04	SPRING GUIDE	S45C	1	ø44.5xø12x4L	
S05	CONICAL SPRING	PUR.	2	ø40xø20.4x2.75H	
S06	KEY	PUR.	1	2R 4x4x15	
S07	PRESSURE PLATE B	SS41	1	T12xø54xø12	
S08	BUSH	BC3	1	ø21xø17x7L	
S09	LINING	PAPER	2	T1xø54xø22	for PINION GEAR
S10	PINION GEAR	S45C	1	T7xø59.6xø21	
S11	PRESSURE PLATE A	SS41	1	T7xø54xø12	
S12	2nd. PINION	SCM415	1	ø24.1x97.5	



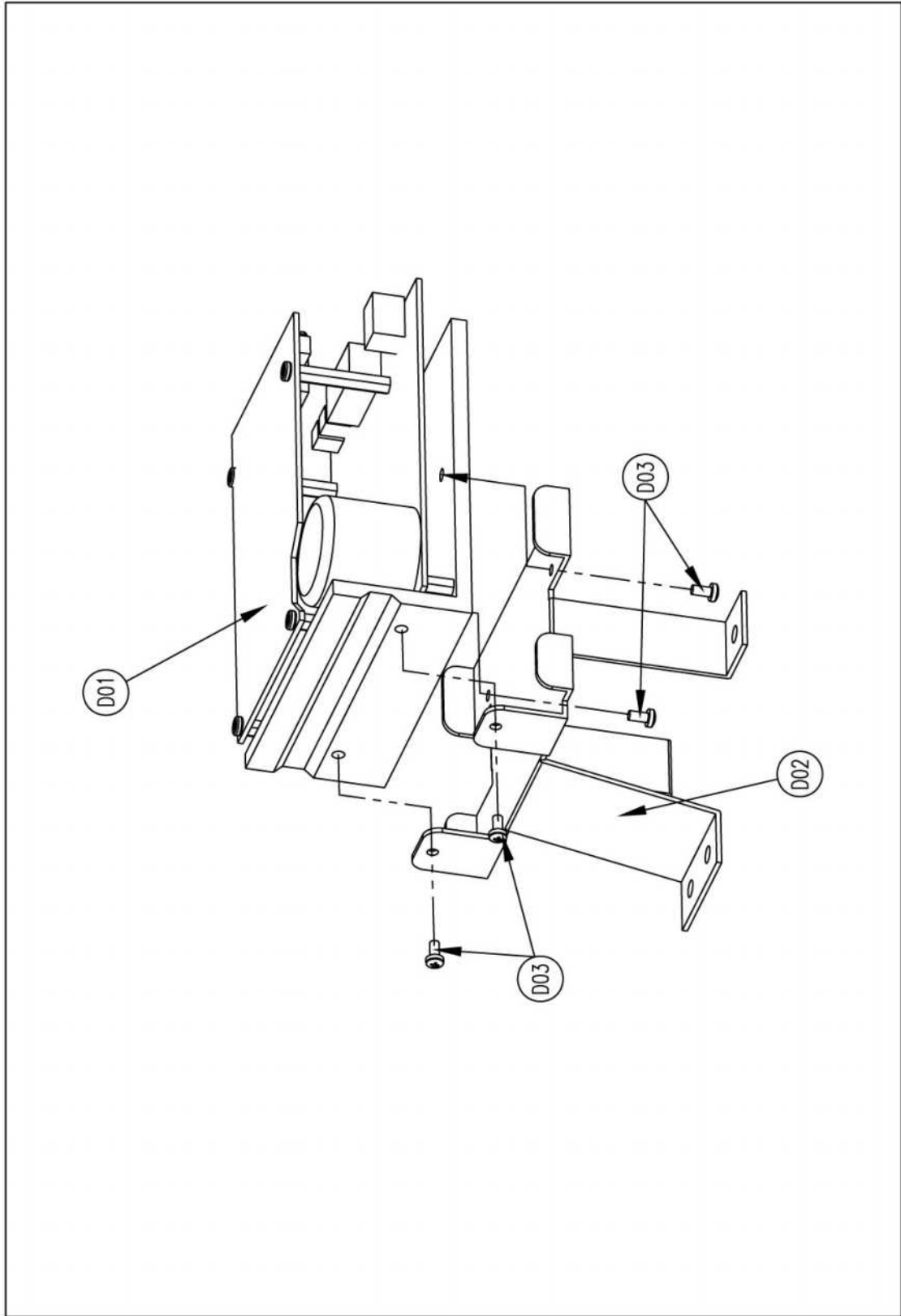
MECHANICAL BRAKE & LOAD SHEAVE Sub Assembly

NO	DESCRIPTION	MATERIAL	Q'TY	SIZE	REMARK
M01	LOAD SHEAVE	S45C	1	ø4x5Pocket	
M02	PRESSURE PLATE C	SS41	1	T7xø100xø22	
M03	LINING	WOVEN	2	T2xø82.5xø62.5	
M04	RATCHET GEAR	S45C	1	ø90xø38x8T	
M05	BUSH	BC3	1	ø38xø32x8L	
M06	LOAD GEAR	S45C	1	ø100xø22x21.5T	
M07	COTTER RING	SCM21	1	T3.8xø42xø30.5	
M08	COTTER	SCM21	2	T4.5xø30xø12	



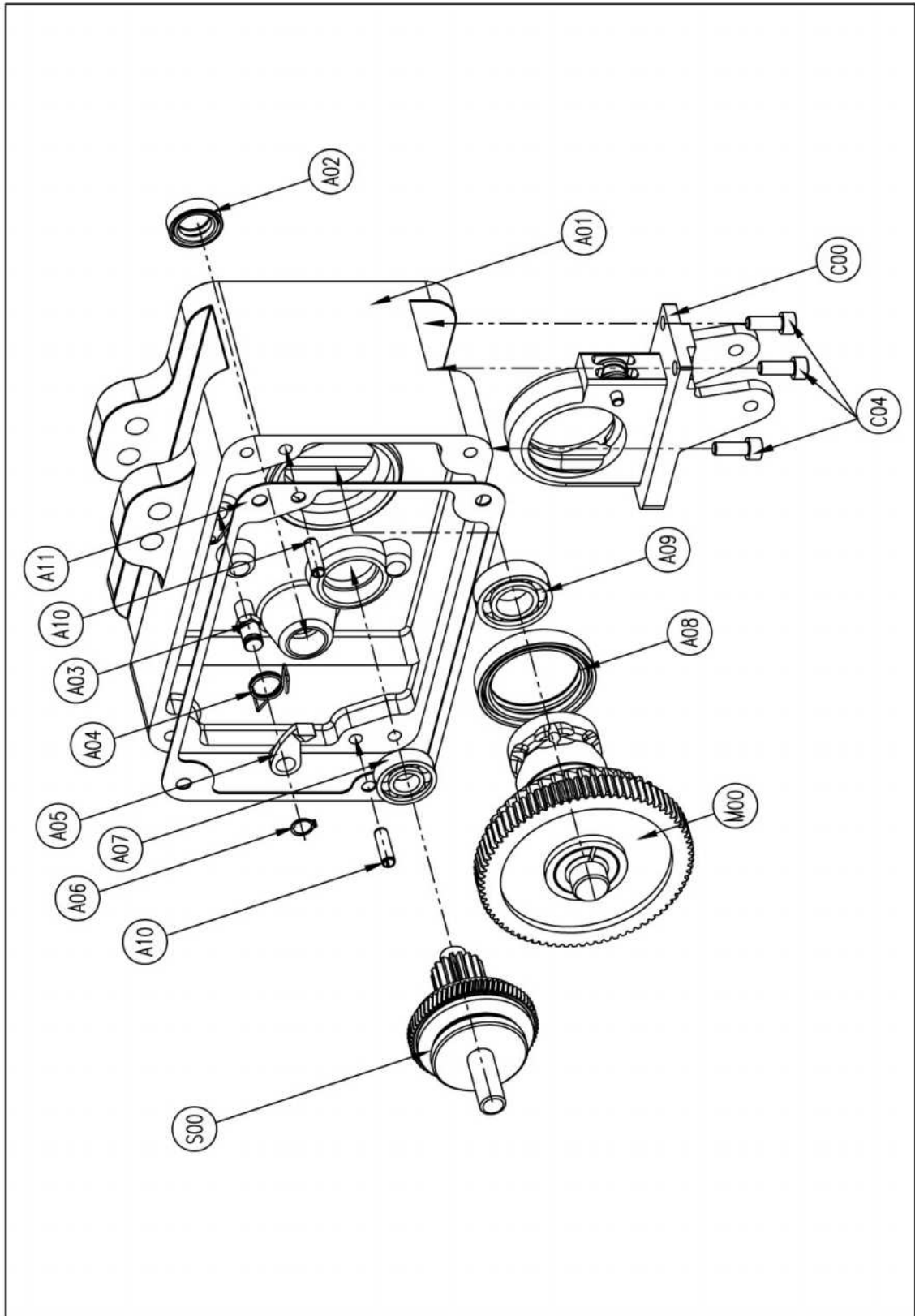
CHAIN GUIDE Sub Assembly

NO	DESCRIPTION	MATERIAL	Q'TY	SIZE	REMARK
C01	CHAIN GUIDE	FCD45	1	ø4	
C02	CHAIN GUIDE ROLLER	SCM21	1	ø17x12	
C03	CHAIN GUIDE ROLLER PIN	SCM21	1	ø5x30L	
C04	SOCKET HEAD CAP BOLT	PUR.	3	M6x15	with S/W



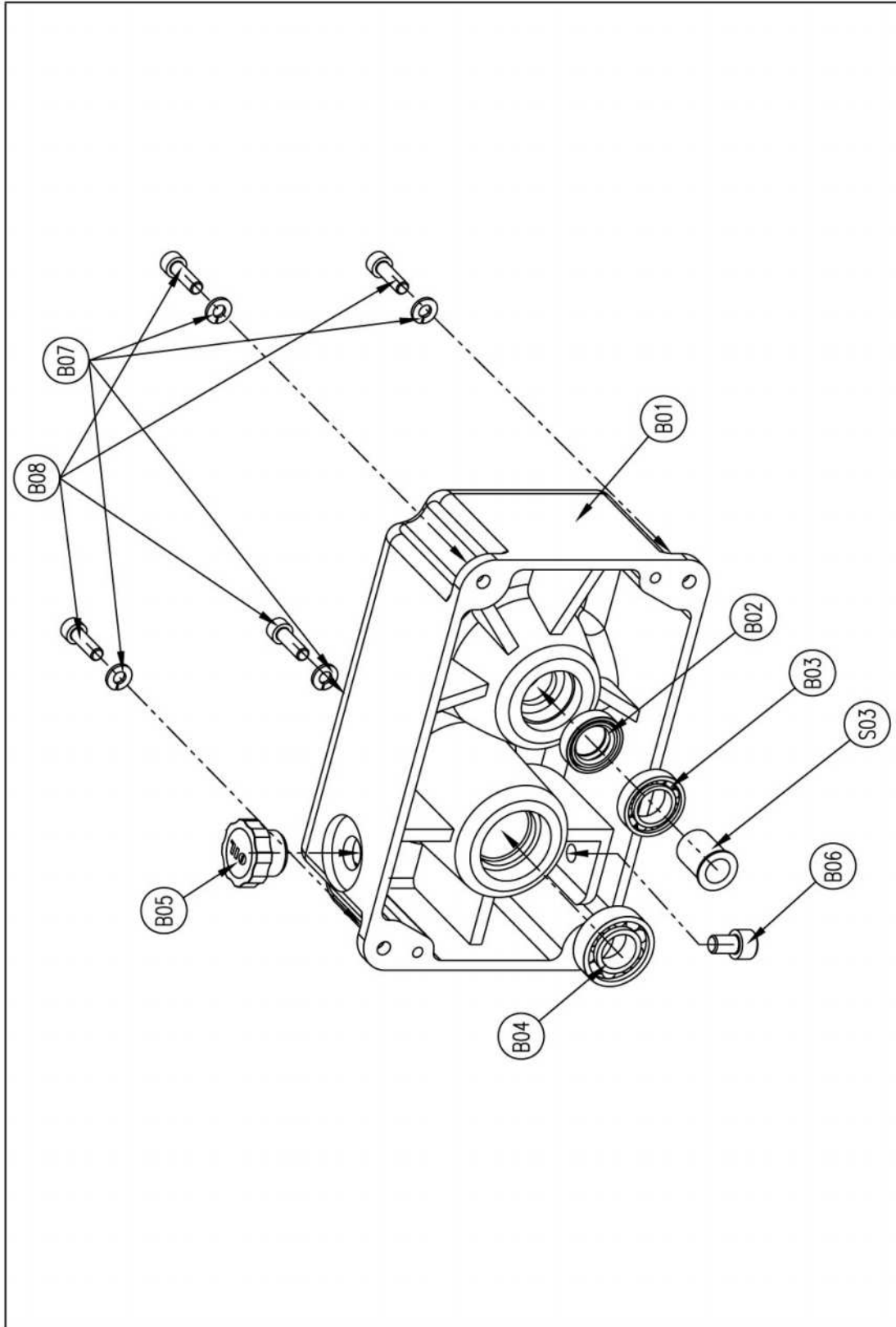
DRIVER(CONTROLLER) Sub Assembly

NO	DESCRIPTION	MATERIAL	Q'TY	SIZE	REMARK
D01	BLDC DRIVER	-	1	4000RPM	TBAH05D
D02	DRIVER PLATE	SS41	1		
D03	PAN HEAD SCREW	PUR.	4	M3x10	



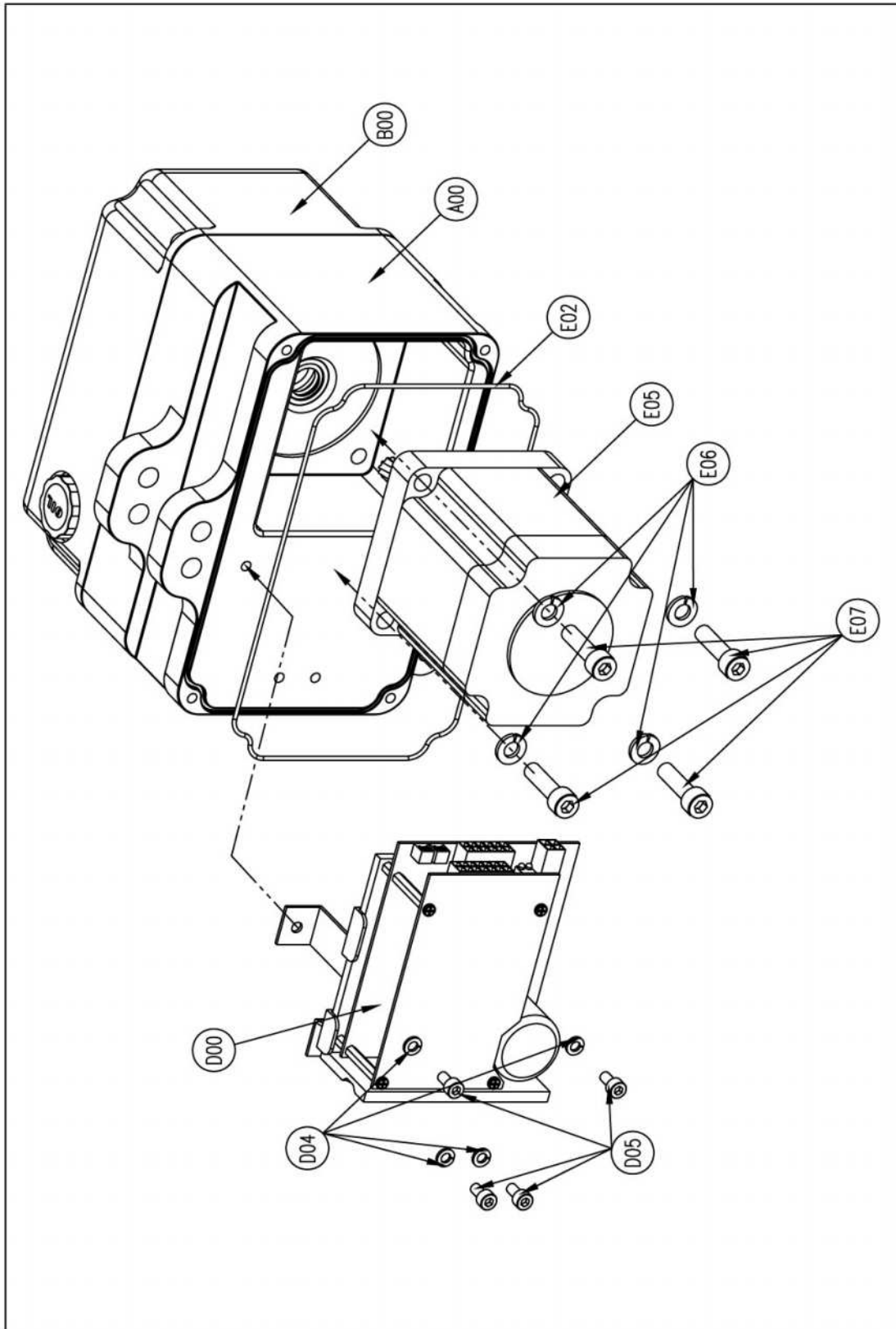
MAIN BODY Sub Assembly

NO	DESCRIPTION	MATERIAL	Q'TY	SIZE	REMARK
A01	MAIN BODY	AC2B	1		5T : 2.786Kg
A02	OIL RETAINER	PUR.	1	ø15xø25x7	
A03	PAWL PIN	S45C	1	육각 11x11.5x26L	
A04	PAWL SPRING	SWB	1	ø1.2x3	
A05	PAWL	S45C	1		
A06	SNAP RING	PUR.	1	ø9	STW-S9
A07	BALL BEARING	PUR.	1	ø12xø28x8	6001zz
A08	OIL RETAINER	PUR.	1	ø42xø55x9	
A09	BALL BEARING	PUR.	1	ø17xø35x10	6003zz
A10	SPRING PIN	PUR.	2	ø6x20	
A11	GASKET	Non-ASBESTOS	1	T1x204.6x127.6	for REDUCER CASE
S00	SLIP CLUTCH Sub Assy		1		
M00	MECHANICAL BRAKE & LOAD SHEAVE Sub Assy		1		
C00	CHAIN GUIDE Sub Assy		1		
C04	SOCKET HEAD CAP BOLT	PUR.	3	M6x15	with S/W



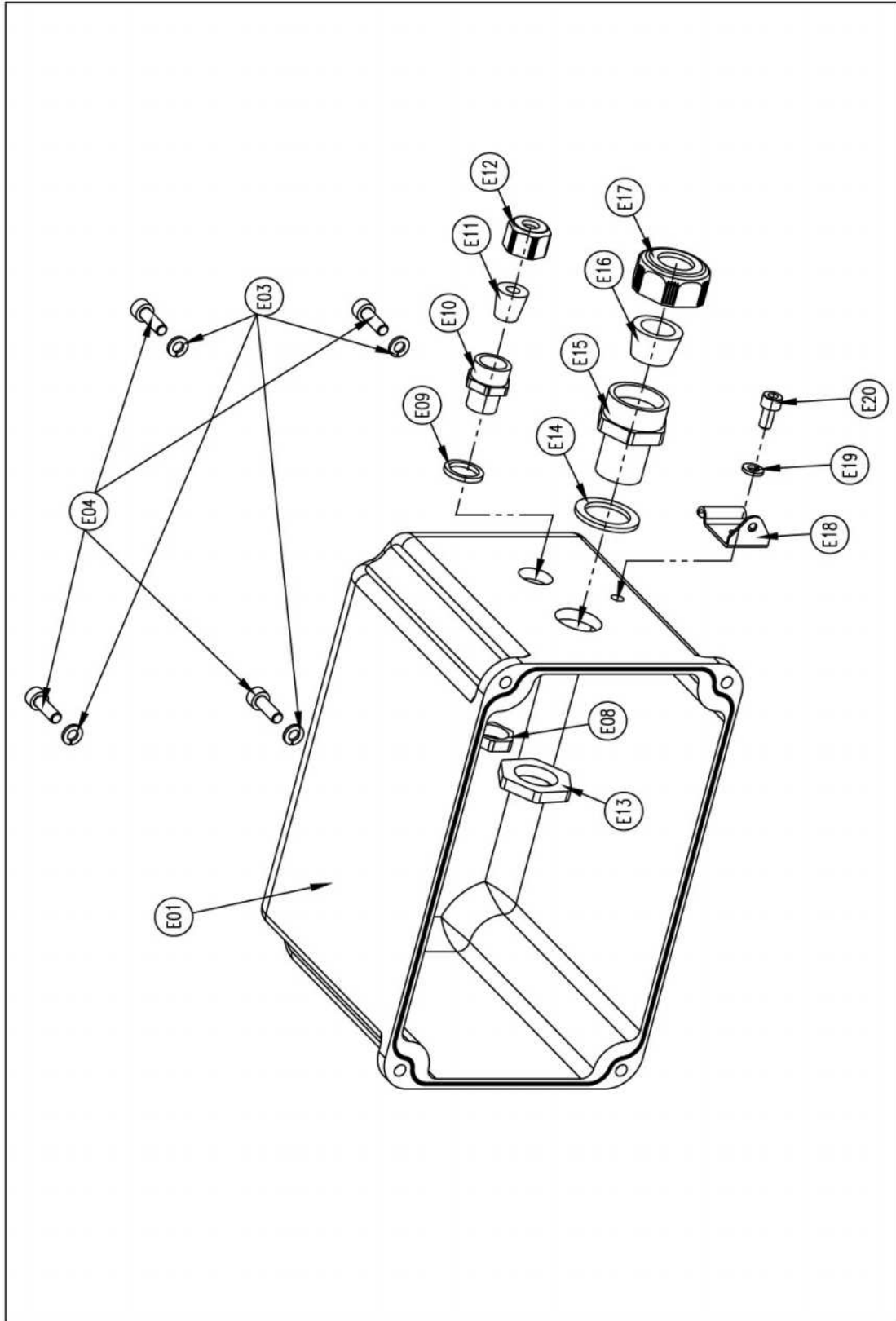
REDUCER CASE Sub Assembly

NO	DESCRIPTION	MATERIAL	Q'TY	SIZE	REMARK
B01	REDUCER CASE	AC2B	1		5T : 1.814Kg
B02	OIL RETAINER	PUR.	1	ø17xø28x7	
B03	BALL BEARING	PUR.	1	ø17xø30x7	6903zz
B04	BALL BEARING	PUR.	1	ø17xø35x10	6003zz
B05	OIL CAP	PUR.	1	PT 1/2	PLASTIC
B06	OIL DRAIN BOLT	PUR.	1	M8x10	
B07	SPRING LOCK WASHER	PUR.	4	M6	
B08	SOCKET HEAD CAP BOLT	PUR.	4	M6x20	
S03	SLEEVE	S45C	1	ø12xø19.5x23L	



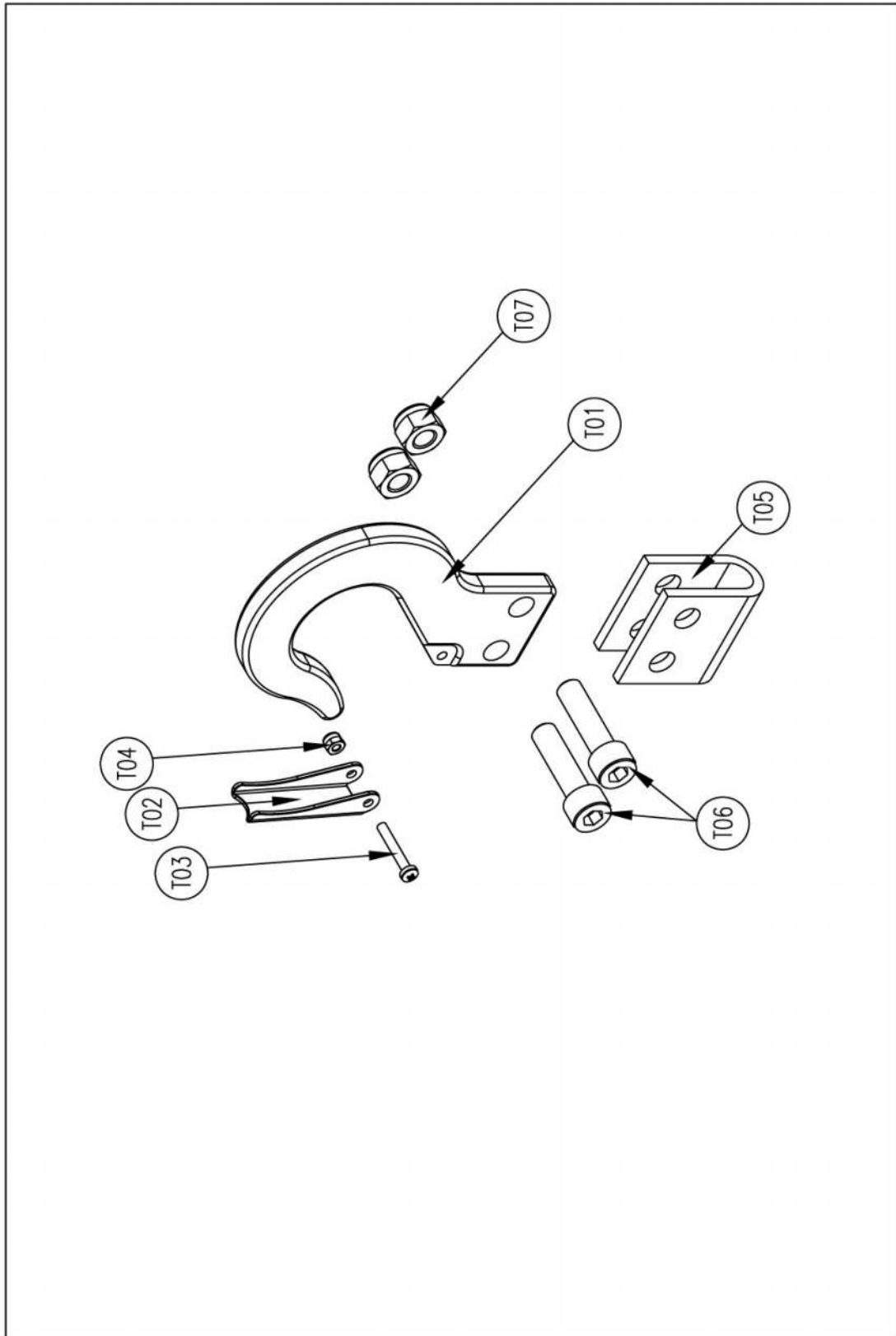
BLDC MOTOR, DRIVER & BODY Assembly

NO	DESCRIPTION	MATERIAL	Q'TY	SIZE	REMARK
A00	MAIN BODY Sub Assy		1		
B00	REDUCER CASE Sub Assy		1		
D00	BLDC Controller Sub Assy		1	4000RPM	TBAH05D
D04	SPRING LOCK WASHER	PUR.	4	M5	
D05	SOCKET HEAD CAP BOLT	PUR.	4	M5x10	
E02	O-RING	PUR.	1	P ϕ 1.9x606	
E05	BLDC MOTOR	PUR.	1	400W, 220V, 4000RPM	TM90-A0443
E06	SPRING LOCK WASHER	PUR.	4	M8	
E07	SOCKET HEAD CAP BOLT	PUR.	4	M8x30	



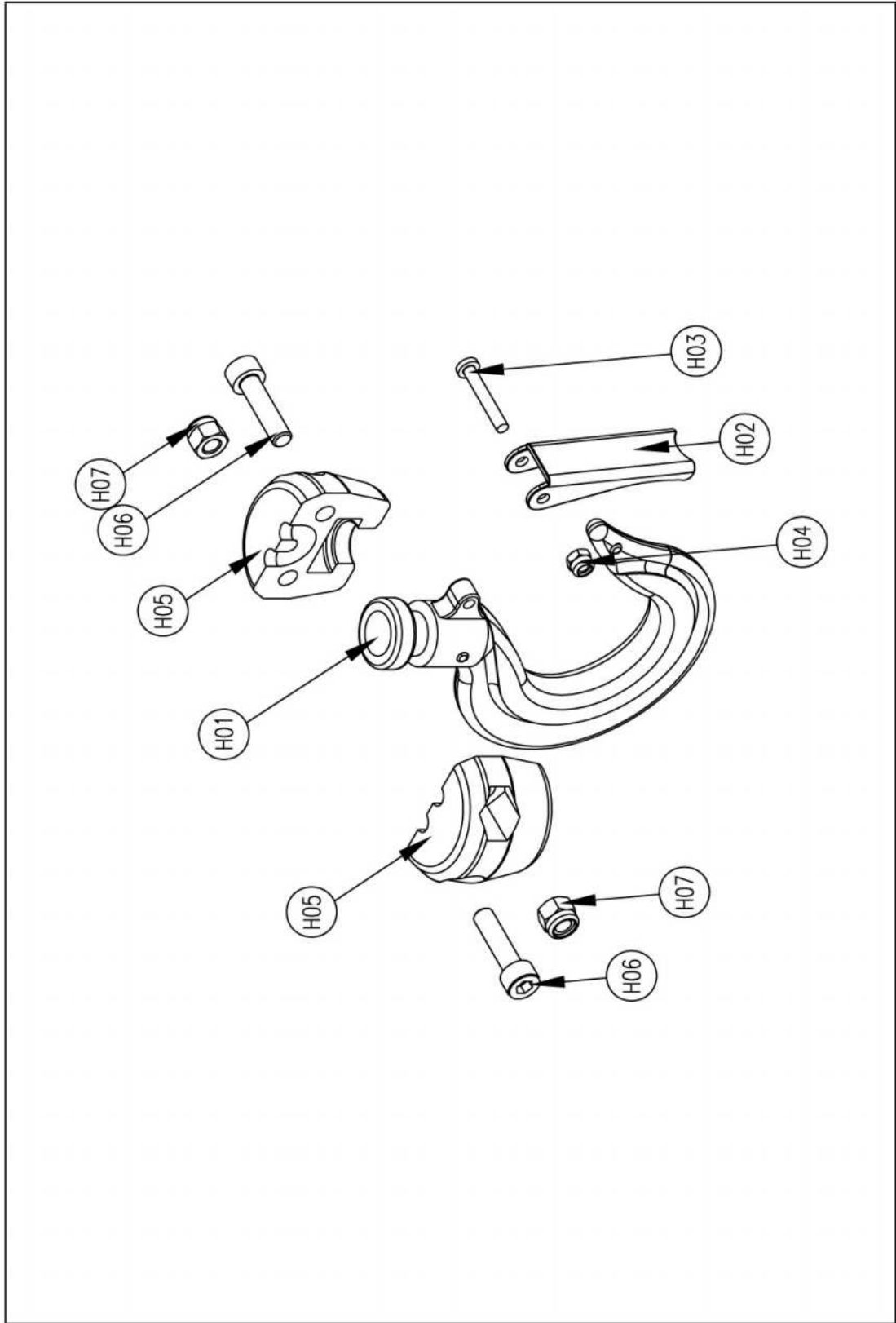
CONTROL PART COVER Sub Assembly

NO	DESCRIPTION	MATERIAL	Q'TY	SIZE	REMARK
E01	CONTROL PART COVER	AC2B	1		5T : 1.124Kg
E02	O-RING	PUR.	1	P ϕ 1.9x606	
E03	SPRING LOCK WASHER	PUR.	4	M5	
E04	SOCKET HEAD CAP BOLT	PUR.	4	M5x15	
E08	LOCK NUT	PUR.	1	NEC-01-8A	
E09	PACKING	PUR.	1	NEC-01-8A	
E10	CABLE GLAND BODY	PUR.	1	NEC-01-8A	
E11	SLEEVE	PUR.	1	NEC-01-8A	
E12	CABLE GLAND CAP	PUR.	1	NEC-01-8A	
E13	LOCK NUT	PUR.	1	NEC-01-16A	
E14	PACKING	PUR.	1	NEC-01-16A	
E15	CABLE GLAND BODY	PUR.	1	NEC-01-16A	
E16	SLEEVE	PUR.	1	NEC-01-16A	
E17	CABLE GLAND CAP	PUR.	1	NEC-01-16A	
E18	CABLE CLIP	SS41	1		
E19	SPRING LOCK WASHER	PUR.	1	M5	
E20	SOCKET HEAD CAP BOLT	PUR.	1	M5x10	



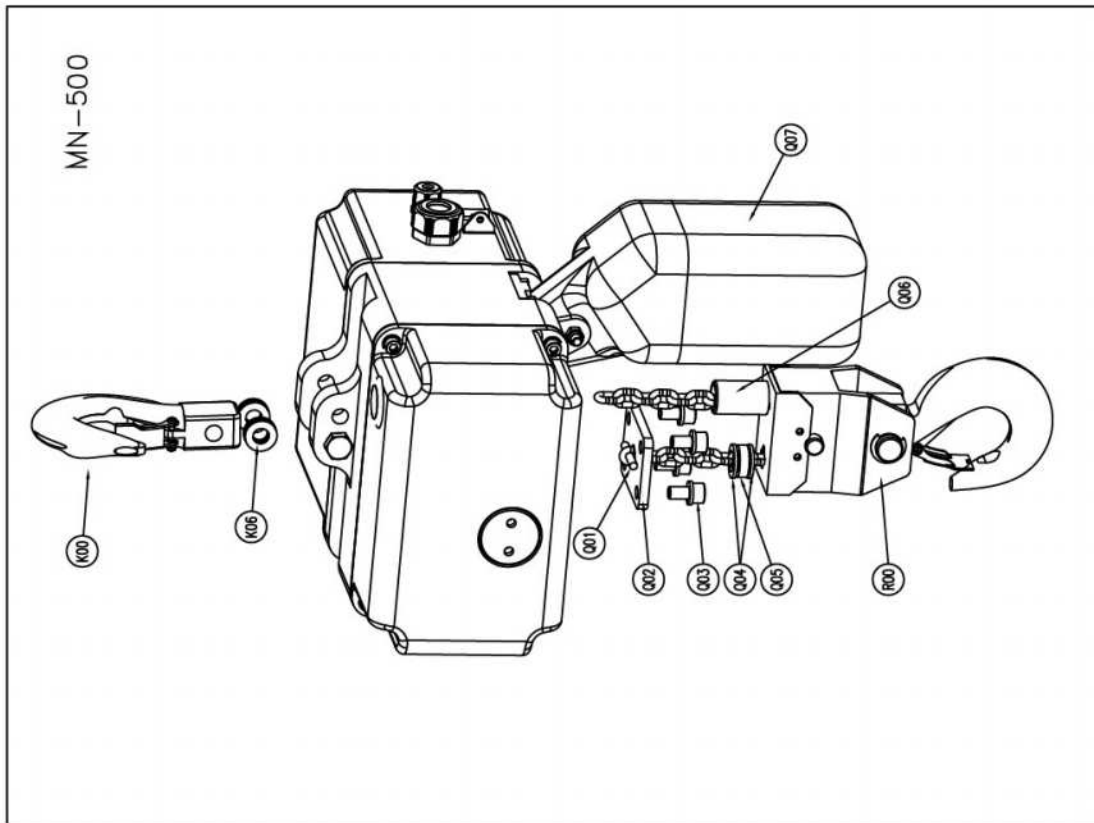
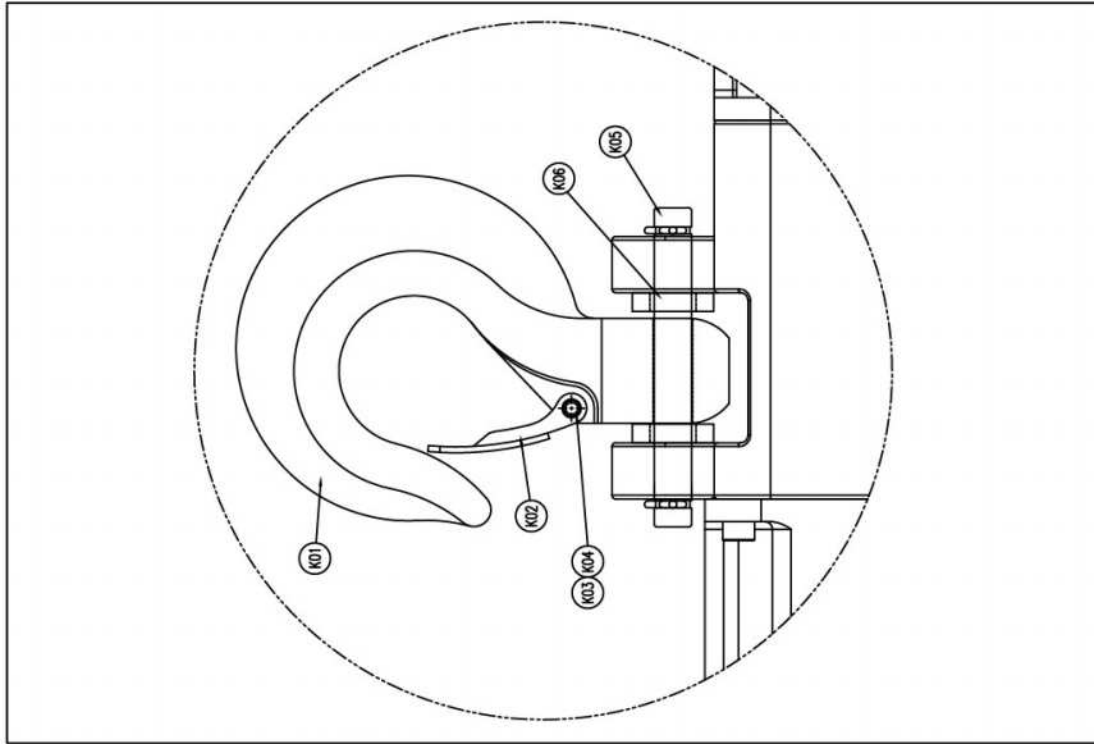
TOP HOOK Sub Assembly

NO	DESCRIPTION	MATERIAL	Q'TY	SIZE	REMARK
T01	TOP HOOK	S45C	1	MN-125(250)	
T02	SAFETY LATCH	SS41	1	Small	
T03	PAN HEAD SCREW	PUR.	1	M3x20	
T04	LOCK NUT	PUR.	1	M3	
T05	TOP HOLDER	SS41	1	MN-125(250)	
T06	SOCKET HEAD CAP BOLT	PUR.	2	M8x30	
T07	LOCK NUT	PUR.	2	M8	



BOTTOM HOOK Sub Assembly

NO	DESCRIPTION	MATERIAL	Q'TY	SIZE	REMARK
H01	BOTTOM HOOK	S45C	1	MN-125(250)	
H02	SAFETY CLIP	SS41	1	Small	with SPRING
H03	PAN HEAD SCREW	PUR.	1	M3x20	
H04	LOCK NUT	PUR.	1	M3	
H05	BOTTOM HOLDER	S45C	2	MN-125(250)	
H06	SOCKET HEAD CAP BOLT	PUR.	2	M5x20	
H07	LOCK NUT	PUR.	2	M5	



BODY Assembly

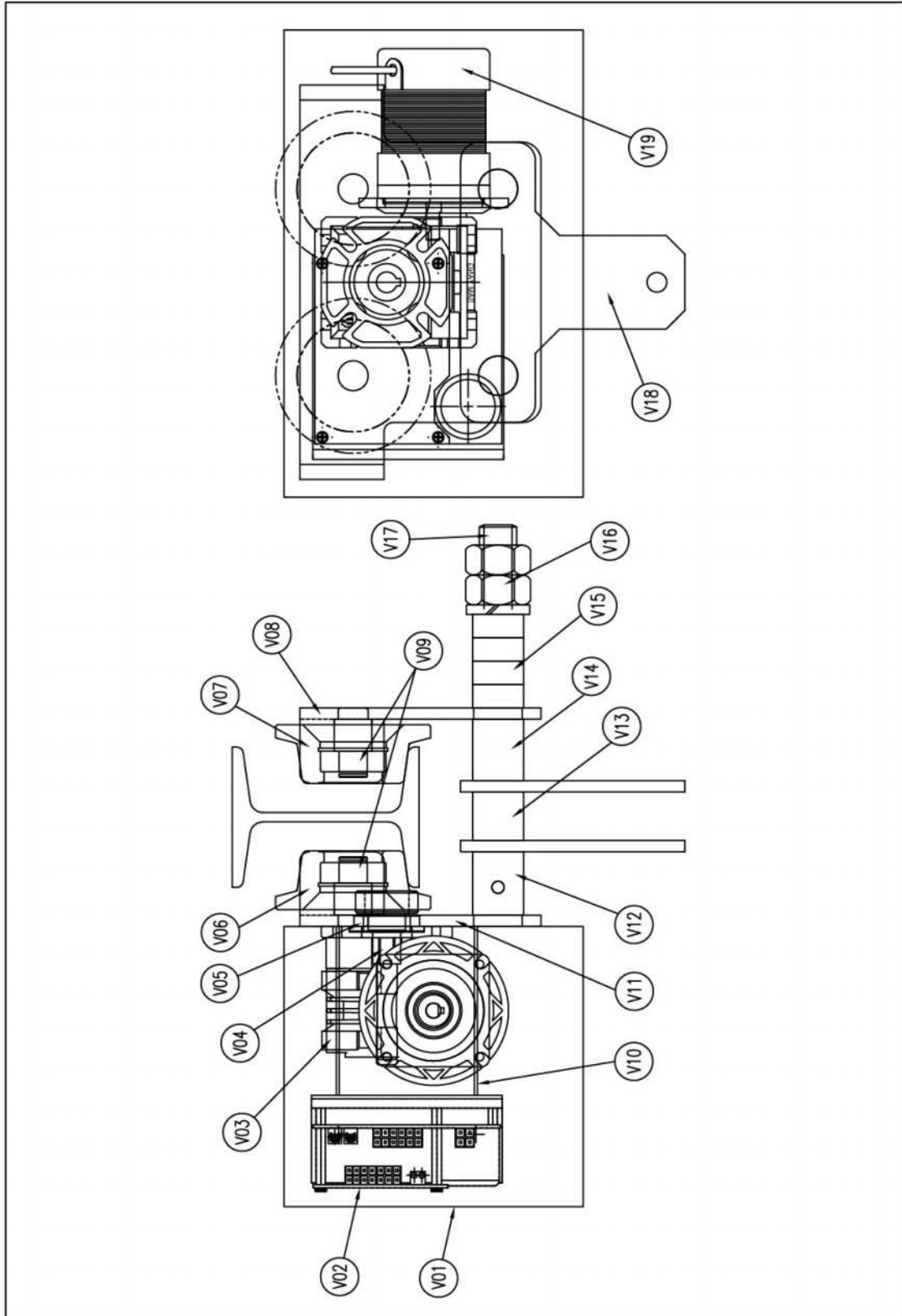
NO	DESCRIPTION	MATERIAL	Q'TY	SIZE	REMARK
K00	TOP HOOK ASSY		1		MN-500
K06	TOP HOOK COLLAR	SPPS	2		MN-500
Q01	CHAIN STOP PIN	SCM415	1	φ5	MN-500
Q02	CHAIN STOPPER	SS275	1		MN-500
Q03	H/T BOLT & S/W	PUR.	4	M8x15	MN-500
Q04	SLIP CUSHION WASHER	PUR.	2		MN-500
Q05	SLIP CUSHION	URETHANE	1		
Q06	CHAIN STOP HOLDER-C	SPPS	1		MN-500
Q07	CHAIN BUCKET	PLASTIC	1		
R00	BOTTOM HOOK ASSY		1		MN-500

TOP HOOK Sub Assembly

NO	DESCRIPTION	MATERIAL	Q'TY	SIZE	REMARK
K01	TOP HOOK	SF540A	1	MN-500	MN-500
K02	SAFETY LATCH & SPRING	SS275	1		MN-500
K03	ROUND HEAD BOLT	PUR.	1	M4x20	MN-500
K04	Hex. LOCK NUT	PUR.	1		MN-500
K05	TOP HOOK PIN	SM45C	1	φ10x85L	R-PIN(SSP-10):2EA
K06	TOP HOOK COLLAR	SPPS	2		MN-500

BOTTOM HOOK Sub Assembly

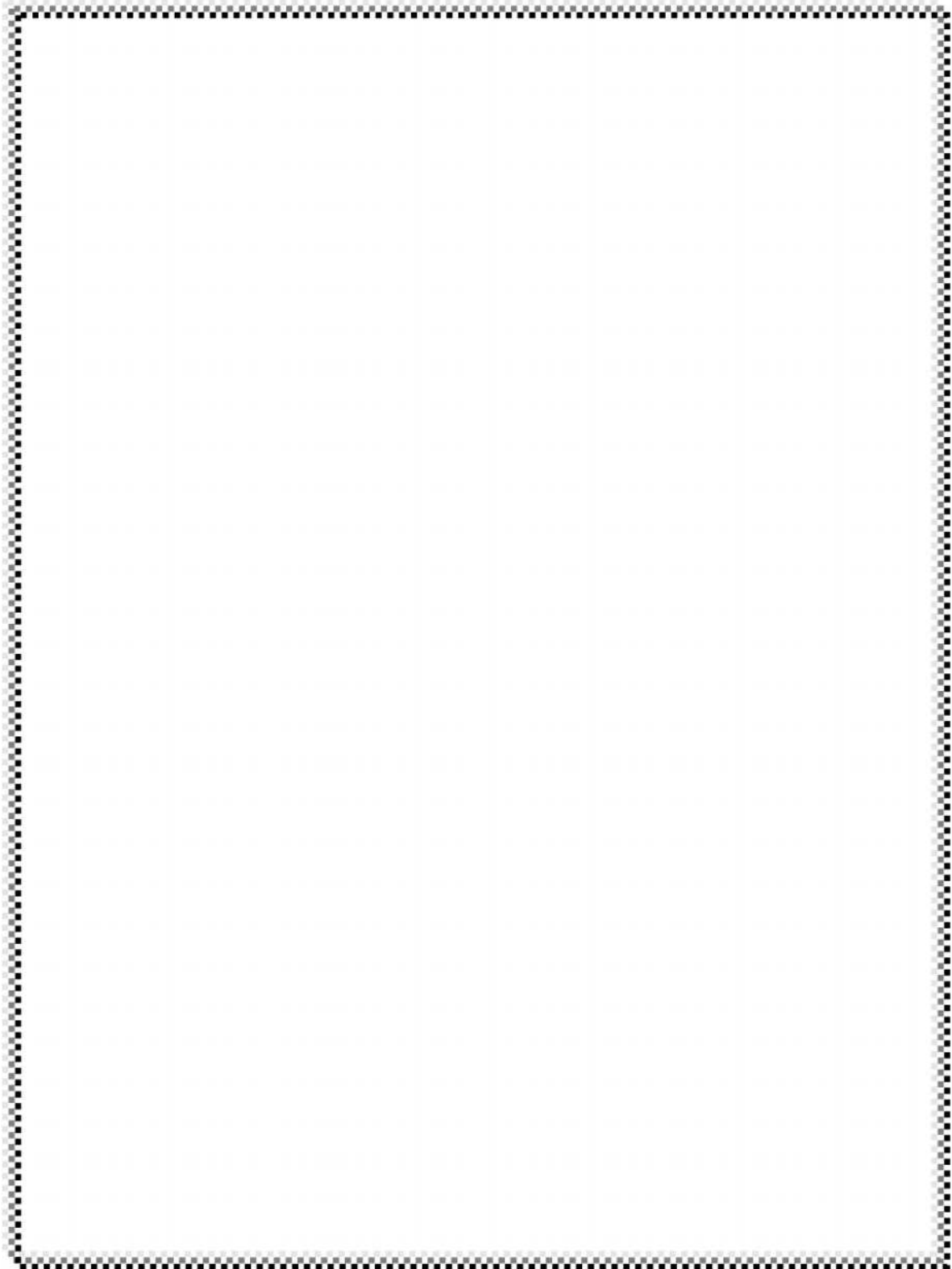
NO	DESCRIPTION	MATERIAL	Q'TY	SIZE	REMARK
R01	SOCKET WRENCH BOLT	PUR.	4	M4x10	MN-500
R02	BOTTOM HOLDER COVER	SS275	1	500kg	MN-500
R03	BOTTOM HOLDER SUPPORTER	SS275	1	32x14x3t	MN-500
R04	IDLE SHEAVE	SCM415	1	φ4	MN-500
R05	IDLE SHEAVE PIN	SCM415	1	φ12x57L	MN-500
R06	SNAP RING	PUR.	1	R19	MN-500
R07	NEEDLE BEARING	PUR.	2	RNA499	MN-500
R08	CHAIN GUIDE	SS275	2	T3x13	MN-500
R09	BOTTOM HOLDER PLATE	SS275	2		MN-500
R10	TAIL CROSS	SS275	1	T25x70x45	MN-500
R11	HEX. NUT	PUR.	1	M16	MN-500
R12	E-RING	PUR.	2	φ12	MN-500
R13	THRUST BEARING	PUR.	1	51103	MN-500
R14	PAN HEAD SCREW & NUT	PUR.	1	M3x20	MN-500
R15	SAFETY LATCH & SPRING	SS275	1		MN-500
R16	BOTTOM HOOK	SF540A	1		MN-500



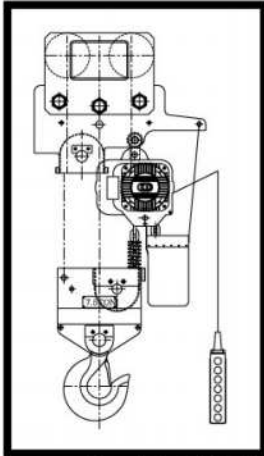
MOTORIZED TROLLEY Assembly

NO	DESCRIPTION	MATERIAL	Q'TY	SIZE	REMARK
V01	CONTOL BOX	PLASTIC	1	250x160x150	FIBOX 162515
V02	BLDC DRIVER	PUR.	1	2000RPM	TBAH05D
V03	WORM REDUCER	PUR.	1	MTW25 1/10	SY25-MO
V04	OUTPUT PINION	SM45C	1	ø33.5x93	KEY 4X4X16L
V05	SPACER	SM45C	1	ø40x8	
V06	GEARED WHEEL	SM45C	2	ø83x31.5	BEARING #6202
V07	PLAIN WHEEL	SM45C	2	ø83x31.5	BEARING #6202
V08	PLAIN SIDE PLATE	SS275	1	207x129x6T	
V09	WHEEL PIN	SM45C	4	ø20x37.2	
V10	DRIVER PLATE	SS275	1		
V11	GEAR SIDE PLATE	SS275	1	207x129x6T	
V12	STAY PIPE A	SPPS	2	ø27.3xø20.5x40	
V13	COLLAR A	SPPS	2	ø27.3xø20.5x26	
V14	STAY PIPE B	SPPS	2	ø27.3xø20.5x39	
V15	COLLAR B	SPPS	8	ø27.3xø20.5x12.5	
V16	NUT	PUR.	4	M20	S/WASHER:2EA
V17	STAY BOLT	SM45C	2	ø20x215	
V18	HANGER	SS275	2	150X120X6T	
V19	BLDC MOTOR	PUR.	1	80W,220V,2000RPM	BK60-N220080

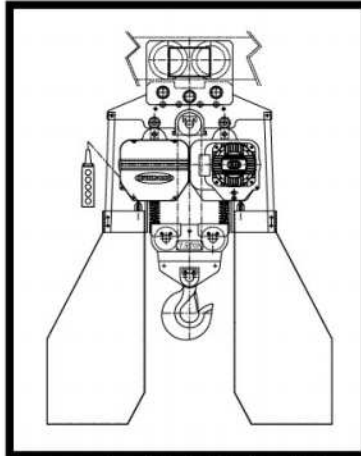
MEMO



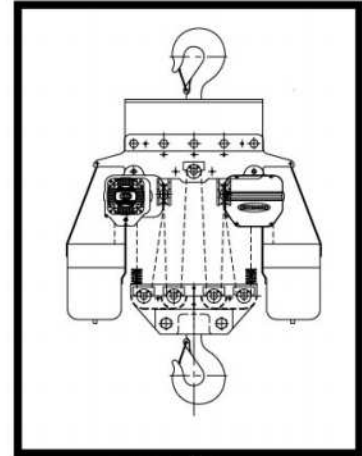
KUKDONG HOIST [SPECIAL TYPE]



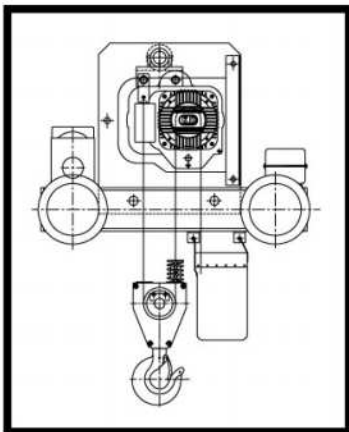
▲7.5Ton(1-BODY)



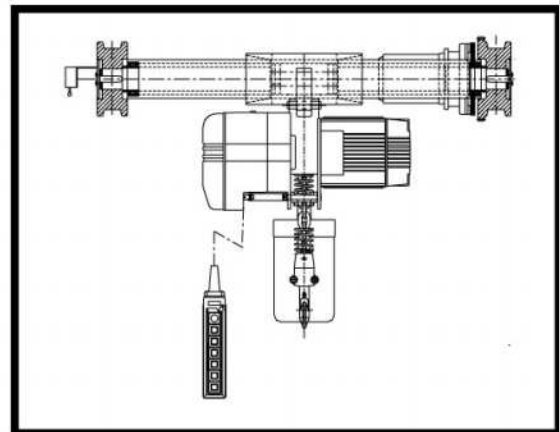
▲7.5Ton(2-BODY) , 10Ton



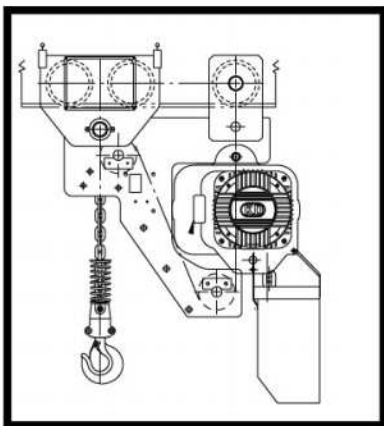
▲15~30Ton



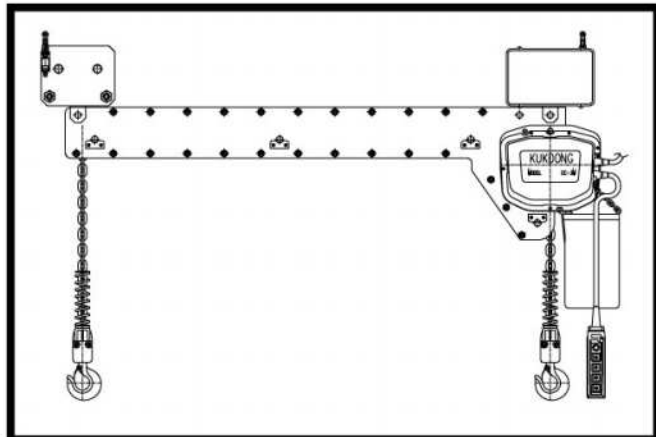
▲CRAB TYPE-I
(Standard TYPE)



▲CRAB TYPE-II(PIN TYPE)



▲LOW HEAD TYPE



▲TWIN HOOK TYPE

KUKDONG

PRODUCTS

- ELCTRIC CHAIN HOIST(0.5~30ton)
- ELCTRIC CHAIN HOIST(0.125~0.5ton)
 - MINI HOIST
- CHAIN BLOCK(0.5~30ton)
- LEVER BLOCK(0.75~6ton)
- CRANE :
 - SUSPENSION CRANE
 - OVER HEAD CRANE
 - JIB CRANE
 - GANTRY CRANE
- GEARED & PLAIN TROLLEY(0.5~30ton)
- GEARED MOTOR(0.4Kw,0.75Kw,1.5Kw)
- END CARRIAGE(SADDLE)
- LOAD CHAIN

▼ Head Office

119, Haebong-Ro, Danwon-gu, Ansan-city,
Kyunggi-do, KOREA
TEL: 82-31-491-5311
FAX: 82-31-492-0473
<http://www.kdhoist.com>
e-mail:kukdong@kdhoist.com

▼ A / S Office

TEL: 82-80-380-0001

▼ Overseas DEPT.

TEL: 82-2-783-4203
FAX: 82-2-784-6340
<http://www.kdhoist.com>
e-mail:kukdonghoist@gmail.com

 KUKDONG HOIST CO.,LTD.

Vol.2 OCT.2020